

Fibulin-1 antibody



Catalog Number: 110662

Product name

Fibulin-1 antibody

Specificity

Human, Mouse, Rat; other species not tested.

Antibody description

Fibulin-1 Rabbit Polyclonal antibody. Positive WB detected in human brain tissue, human placenta tissue. Observed molecular weight by Western-blot: 72-74kd

Preparation

This antibody was obtained by immunization of Fibulin-1 recombinant protein (Accession Number: NM_001996). Purification method: Antigen affinity purified.

Formulation

PBS with 0.02% sodium azide and 50% glycerol pH 7.3.

Storage

Store at -20°C. DO NOT ALIQUOT

Clonality

Polyclonal

Ig Type

Rabbit IgG

Applications

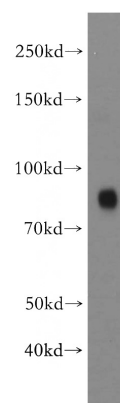
ELISA, WB

Dilutions

Recommended Dilution:

WB: 1:500-1:5000

Validations



human brain tissue were subjected to SDS PAGE followed by western blot with Catalog No:110662(FBLN1 antibody) at dilution of 1:500