

Fibrinogen gamma chain antibody



Catalog Number: 110657

Product name

Fibrinogen gamma chain antibody

Specificity

Human, Mouse, Rat; other species not tested.

Antibody description

Fibrinogen gamma chain Rabbit Polyclonal antibody. Positive WB detected in human spleen tissue, human liver tissue. Positive IHC detected in human hepatocirrhosis tissue. Observed molecular weight by Western-blot: 52 kDa

Preparation

This antibody was obtained by immunization of Fibrinogen gamma chain recombinant protein (Accession Number: NM_000509). Purification method: Antigen affinity purified.

Formulation

PBS with 0.02% sodium azide and 50% glycerol pH 7.3.

Storage

Store at -20°C. DO NOT ALIQUOT

Clonality

Polyclonal

Ig Type

Rabbit IgG

Applications

ELISA, WB, IHC

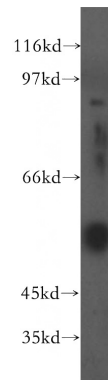
Dilutions

Recommended Dilution:

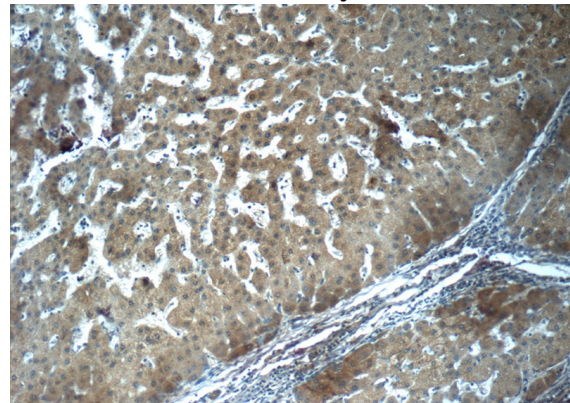
WB: 1:500-1:5000

IHC: 1:20-1:200

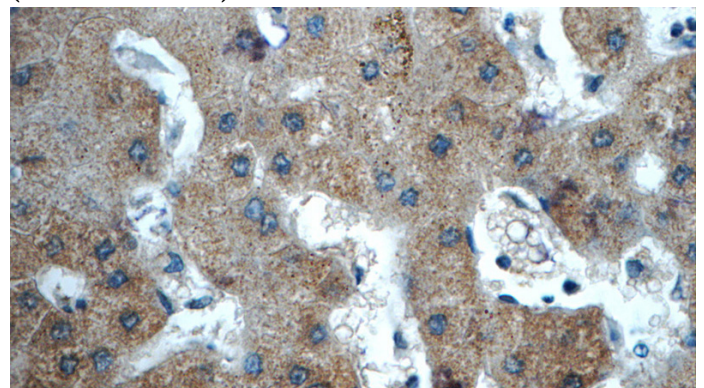
Validations



human spleen tissue were subjected to SDS PAGE followed by western blot with Catalog No:110657(FGG antibody) at dilution of 1:400



Immunohistochemistry of paraffin-embedded human hepatocirrhosis tissue slide using Catalog No:110657(FGG Antibody) at dilution of 1:50 (under 10x lens)



Immunohistochemistry of paraffin-embedded human hepatocirrhosis tissue slide using Catalog No:110657(FGG Antibody) at dilution of 1:50

Fibrinogen gamma chain antibody



Catalog Number: 110657

(under 40x lens)