

fibrillin 2-Specific antibody



Catalog Number: 110655

Product name

fibrillin 2-Specific antibody

Specificity

Human, Mouse, Rat; other species not tested.

Antibody description

fibrillin 2-Specific Rabbit Polyclonal antibody.
Positive WB detected in human brain tissue, HepG2 cells, L02 cells, mouse lung tissue. Positive IHC detected in human placenta tissue. Observed molecular weight by Western-blot: 290 kDa, 160 kDa

Preparation

This antibody was obtained by immunization of Peptide (Accession Number: NM_001999).
Purification method: Antigen affinity purified.

Formulation

PBS with 0.1% sodium azide and 50% glycerol pH 7.3.

Storage

Store at -20°C. DO NOT ALIQUOT

Clonality

Polyclonal

Ig Type

Rabbit IgG

Applications

ELISA, WB, IHC

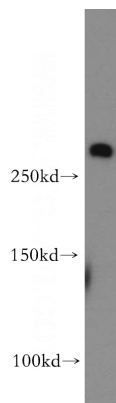
Dilutions

Recommended Dilution:

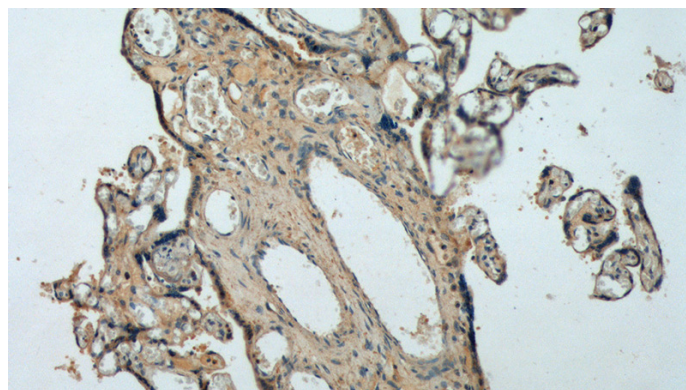
WB: 1:500-1:5000

IHC: 1:50-1:500

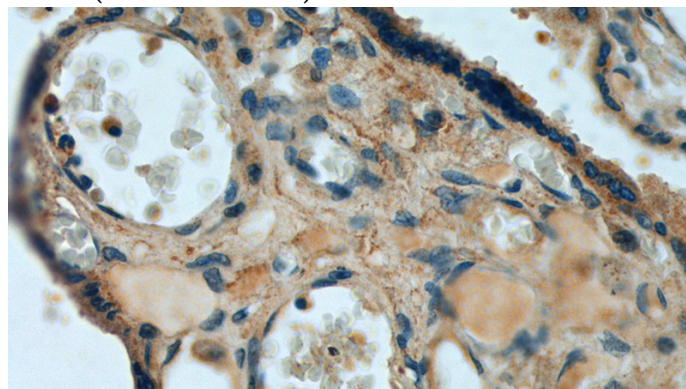
Validations



human brain tissue were subjected to SDS PAGE followed by western blot with Catalog No:110655(FBN2-Specific antibody) at dilution of 1:500



Immunohistochemistry of paraffin-embedded human placenta tissue slide using Catalog No:110655(FBN2-Specific Antibody) at dilution of 1:100 (under 10x lens).



Immunohistochemistry of paraffin-embedded human placenta tissue slide using Catalog

fibrillin 2-Specific antibody



Catalog Number: 110655

No:110655(FBN2-Specific Antibody) at dilution of 1:100 (under 40x lens).