

# FH antibody

Catalog Number: 110646

## Product name

FH antibody

Recommended Dilution:

WB: 1:500-1:5000

## Specificity

Human, Mouse, Rat; other species not tested.

IP: 1:500-1:5000

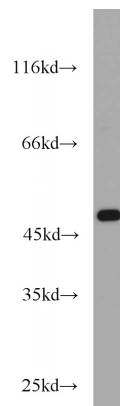
IHC: 1:20-1:200

## Antibody description

FH Rabbit Polyclonal antibody. Positive FC detected in HepG2 cells. Positive IF detected in HepG2 cells. Positive IHC detected in human prostate cancer tissue, human liver tissue. Positive IP detected in HepG2 cells. Positive WB detected in HeLa cells, A431 cells, HEK-293 cells, HepG2 cells, human liver tissue, L02 cells, mouse liver tissue. Observed molecular weight by Western-blot: 47-50 kDa

IF: 1:10-1:100

## Validations



## Preparation

This antibody was obtained by immunization of FH recombinant protein (Accession Number: NM\_000143). Purification method: Antigen affinity purified.

HeLa cells were subjected to SDS PAGE followed by western blot with Catalog No:110646(FH antibody) at dilution of 1:1000

## Formulation

PBS with 0.1% sodium azide and 50% glycerol pH 7.3.

## Storage

Store at -20°C. DO NOT ALIQUOT

## Clonality

Polyclonal

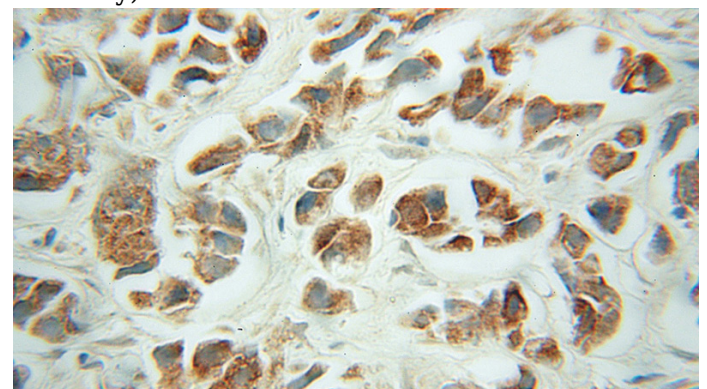
## Ig Type

Rabbit IgG

## Applications

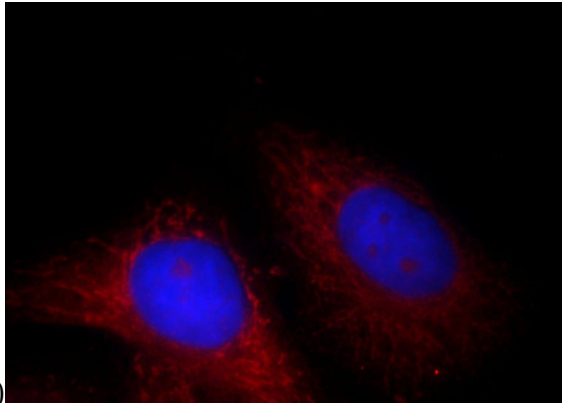
ELISA, WB, IHC, IF, FC, IP

## Dilutions



# FH antibody

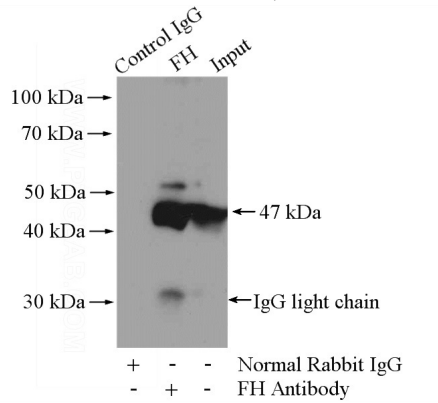
Catalog Number: 110646



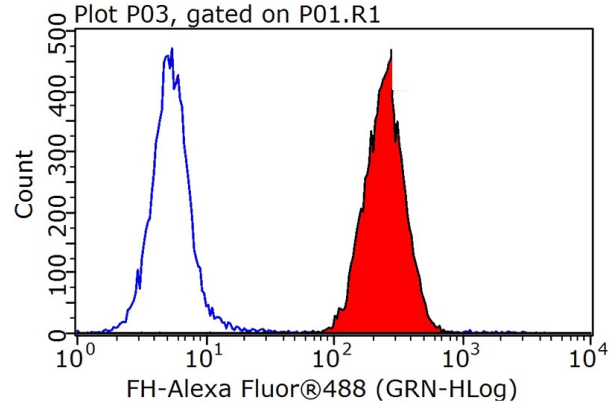
40x lens)

Immunofluorescent analysis of HepG2 cells, using FH antibody Catalog No:110646 at 1:25 dilution and Rhodamine-labeled goat anti-rabbit IgG (red). Blue pseudocolor = DAPI (fluorescent DNA

dye).



IP Result of anti-FH (IP:Catalog No:110646, 4ug; Detection:Catalog No:110646 1:1000) with HepG2 cells lysate 2400ug.



1X10<sup>6</sup> HepG2 cells were stained with 0.2ug FH antibody (Catalog No:110646, red) and control antibody (blue). Fixed with 90% MeOH blocked with 3% BSA (30 min). Alexa Fluor 488-conjugated AffiniPure Goat Anti-Rabbit IgG(H+L) with dilution 1:1000.