

FGFBP3 antibody



Catalog Number: 110639

Product name

FGFBP3 antibody

Recommended Dilution:

WB: 1:200-1:2000

Specificity

Human, Mouse; other species not tested.

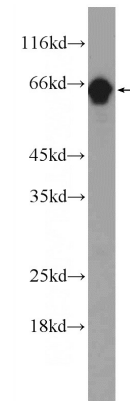
IHC: 1:20-1:200

IF: 1:10-1:100

Antibody description

FGFBP3 Rabbit Polyclonal antibody. Positive WB detected in HeLa cells, A431 cells, A549 cells, HEK-293 cells, human testis tissue, mouse brain tissue, SH-SY5Y cells. Positive FC detected in HeLa cells. Positive IHC detected in human colon tissue. Positive IF detected in A431 cells. Observed molecular weight by Western-blot: 60-65 kda

Validations



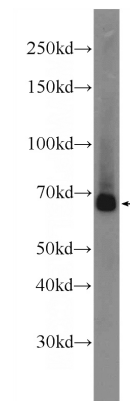
Preparation

This antibody was obtained by immunization of FGFBP3 recombinant protein (Accession Number: NM_152429). Purification method: Antigen affinity purified.

human testis tissue were subjected to SDS PAGE followed by western blot with Catalog No:110639(FGFBP3 Antibody) at dilution of 1:300

Formulation

PBS with 0.1% sodium azide and 50% glycerol pH 7.3.



Storage

Store at -20°C. DO NOT ALIQUOT

Clonality

Polyclonal

Ig Type

Rabbit IgG

Applications

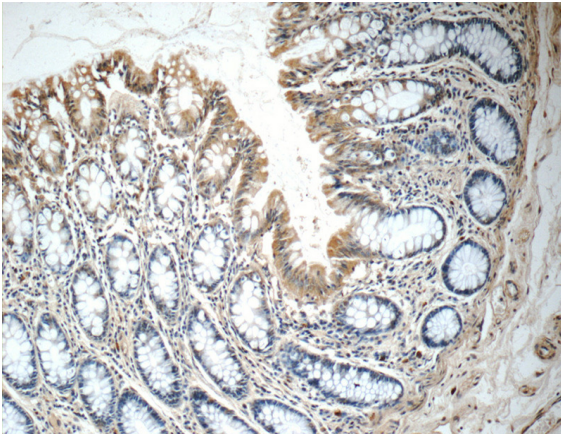
ELISA, WB, IHC, IF, FC

Dilutions

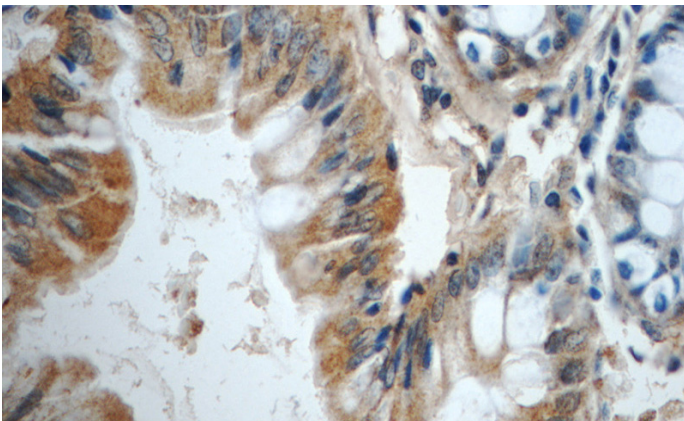
HeLa cells were subjected to SDS PAGE followed by western blot with Catalog No:110639(FGFBP3 Antibody) at dilution of 1:600

FGFBP3 antibody

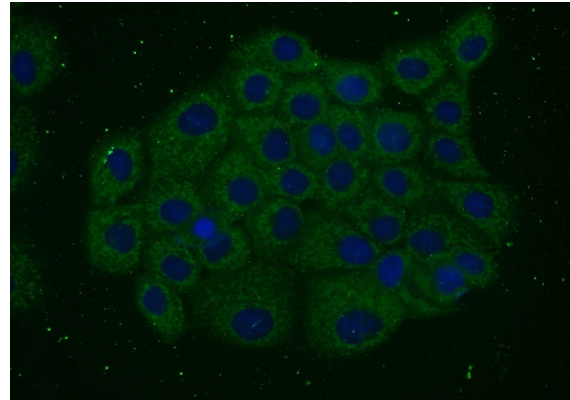
Catalog Number: 110639



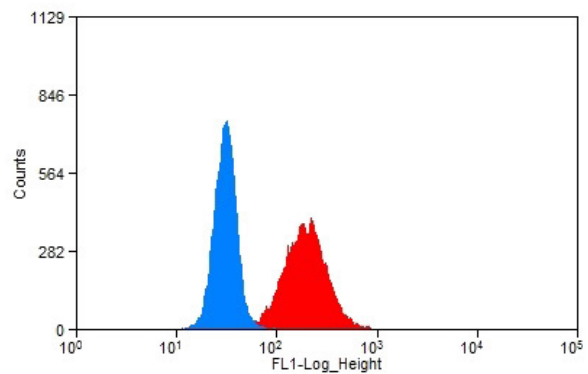
Immunohistochemistry of paraffin-embedded human colon tissue slide using Catalog No:110639(FGFBP3 Antibody) at dilution of 1:50 (under 10x lens)



Immunohistochemistry of paraffin-embedded human colon tissue slide using Catalog No:110639(FGFBP3 Antibody) at dilution of 1:50 (under 40x lens)



Immunofluorescent analysis of A431 cells using Catalog No:110639(FGFBP3 Antibody) at dilution of 1:25 and Alexa Fluor 488-conjugated AffiniPure Goat Anti-Rabbit IgG(H+L)



1X10⁶ HeLa cells were stained with 0.2ug FGFBP3 antibody (Catalog No:110639, red) and control antibody (blue). Fixed with 90% MeOH blocked with 3% BSA (30 min). Alexa Fluor 488-conjugated AffiniPure Goat Anti-Rabbit IgG(H+L) with dilution 1:1500.