

FEM1C antibody



Catalog Number: 110617

Product name

FEM1C antibody

IHC: 1:20-1:200

IF: 1:10-1:100

Specificity

Human, Mouse; other species not tested.

Antibody description

FEM1C Rabbit Polyclonal antibody. Positive IF detected in HeLa cells. Positive IHC detected in human heart tissue, mouse brain tissue. Positive WB detected in HepG2 cells, mouse brain tissue, mouse heart tissue. Observed molecular weight by Western-blot: 69 kDa

Preparation

This antibody was obtained by immunization of FEM1C recombinant protein (Accession Number: XM_005272035). Purification method: Antigen affinity purified.

Formulation

PBS with 0.1% sodium azide and 50% glycerol pH 7.3.

Storage

Store at -20°C. DO NOT ALIQUOT

Clonality

Polyclonal

Ig Type

Rabbit IgG

Applications

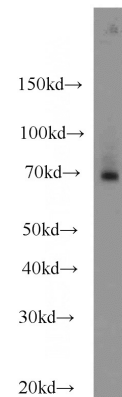
ELISA, WB, IF, IHC

Dilutions

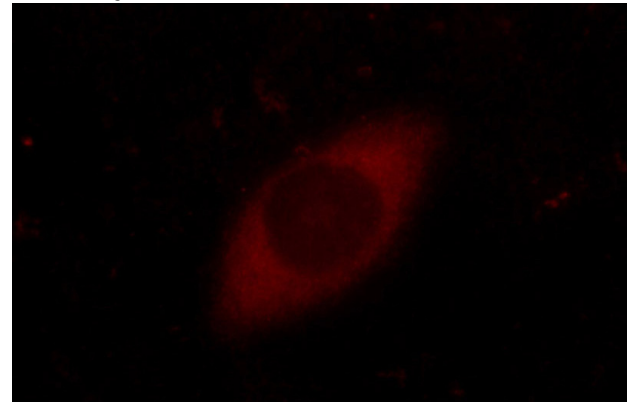
Recommended Dilution:

WB: 1:500-1:5000

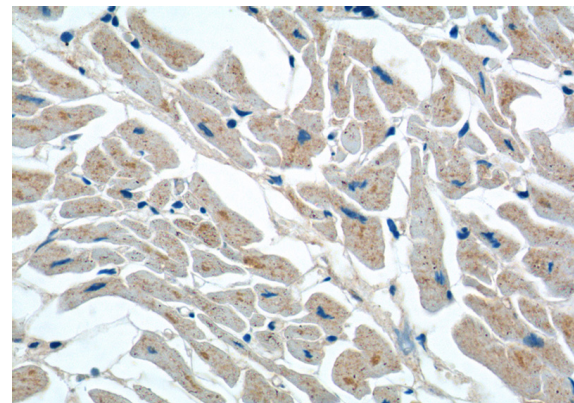
Validations



HepG2 cells were subjected to SDS PAGE followed by western blot with Catalog No:110617(FEM1C antibody) at dilution of 1:1000



Immunofluorescent analysis of HeLa cells using Catalog No:110617(FEM1C Antibody) at dilution of 1:25 and Rhodamine-Goat anti-Rabbit IgG



Immunohistochemistry of paraffin-embedded human heart tissue slide using Catalog No:110617(FEM1C Antibody) at dilution of 1:20

FEM1C antibody



Catalog Number: 110617

No:110617(FEM1C Antibody) at dilution of 1:50 (under 40x lens)