

# FEM1B antibody



Catalog Number: 110616

## Product name

FEM1B antibody

IHC: 1:50-1:500

IF: 1:50-1:500

## Specificity

human, mouse, rat; other species not tested.

## Antibody description

FEM1B Rabbit Polyclonal antibody. Positive WB detected in PC-3 cells, mouse pancreas tissue, mouse testis tissue, RAW 264.7 cells. Observed molecular weight by Western-blot: 70kd. Positive IHC detected in human pancreas cancer tissue, mouse pancreas tissue. Positive IF detected in PC-3 cells

## Preparation

This antibody was obtained by immunization of Peptide (Accession Number: NM\_015322). Purification method: Antigen affinity purified.

## Formulation

PBS with 0.02% sodium azide and 50% glycerol pH 7.3.

## Storage

Store at -20°C. DO NOT ALIQUOT

## Clonality

Polyclonal

## Ig Type

Rabbit IgG

## Applications

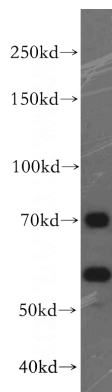
IHC, WB, IF

## Dilutions

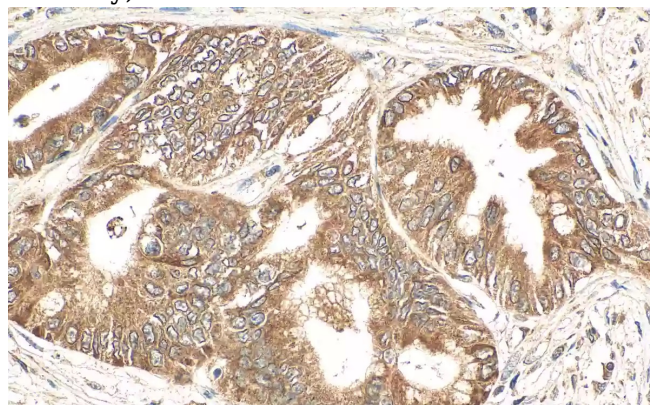
Recommended Dilution:

WB: 1:500-1:1000

## Validations



PC-3 cells were subjected to SDS PAGE followed by western blot with Catalog No:110616(FEM1B antibody) at dilution of 1:300



IHC staining of human pancreas cancer

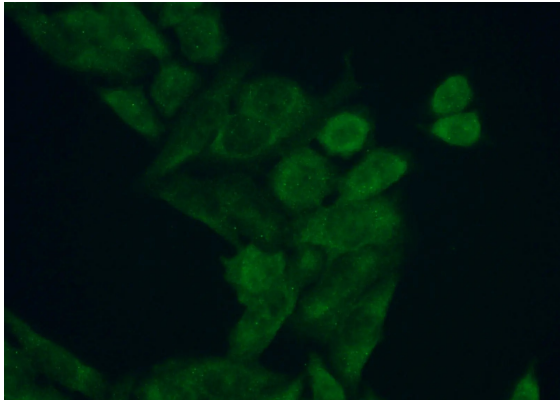
Immunohistochemical analysis of paraffin-embedded human pancreas cancer tissue slide using EM1B antibody at dilution of 1:200 (under 40x lens). Heat mediated antigen retrieval with Tris-EDTA buffer (pH 9.0)

# FEM1B antibody



Catalog Number: 110616

---



## IF Staining of PC-3

Immunofluorescent analysis of (10% Formaldehyde) fixed PC-3 cells using FEM1B antibody at dilution of 1:50 and Alexa Fluor 488-conjugated AffiniPure Goat Anti-Rabbit IgG(H+L).