

# FAM160B2 antibody



Catalog Number: 110575

## Product name

FAM160B2 antibody

IP: 1:200-1:1000

IHC: 1:20-1:200

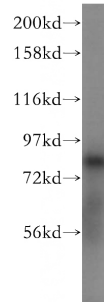
## Specificity

Human; other species not tested.

## Validations

## Antibody description

FAM160B2 Rabbit Polyclonal antibody. Positive IHC detected in human brain tissue. Positive WB detected in human brain tissue. Positive IP detected in HepG2 cells. Observed molecular weight by Western-blot: 82 kDa



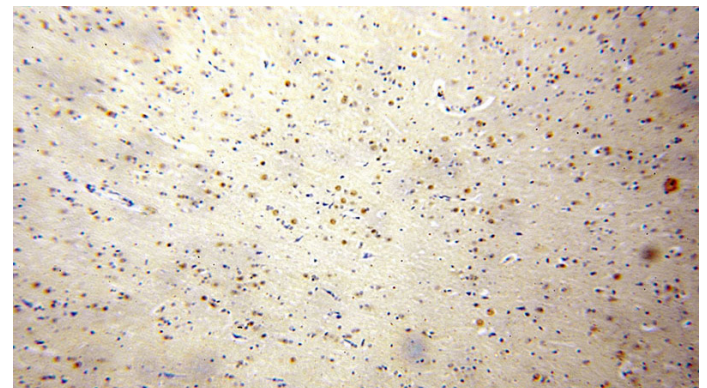
## Preparation

This antibody was obtained by immunization of FAM160B2 recombinant protein (Accession Number: BC012865). Purification method: Antigen affinity purified.

human brain tissue were subjected to SDS PAGE followed by western blot with Catalog No:110575(FAM160B2 antibody) at dilution of 1:500

## Formulation

PBS with 0.02% sodium azide and 50% glycerol pH 7.3.



## Storage

Store at -20°C. DO NOT ALIQUOT

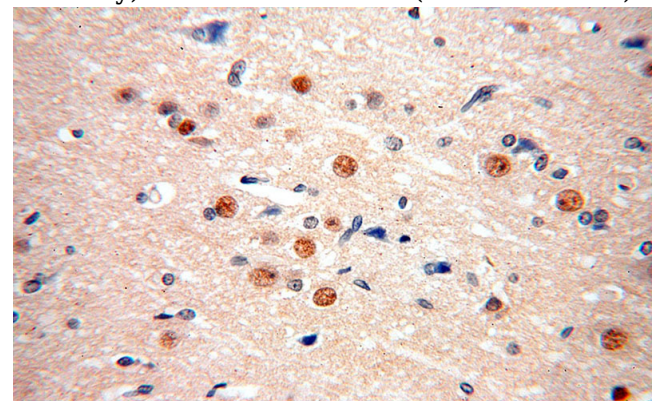
## Clonality

Polyclonal

Immunohistochemical of paraffin-embedded human brain using Catalog No:110575(FAM160B2 antibody) at dilution of 1:100 (under 10x lens)

## Ig Type

Rabbit IgG



## Applications

ELISA, WB, IHC, IP

## Dilutions

Recommended Dilution:

WB: 1:200-1:2000

Immunohistochemical of paraffin-embedded

# FAM160B2 antibody

Catalog Number: 110575

---

human brain using Catalog No:110575(FAM160B2 antibody) at dilution of 1:100 (under 40x lens)

IP Result of anti-FAM160B2 (IP:Catalog No:110575, 4ug; Detection:Catalog No:110575 1:300) with HepG2 cells lysate 3200ug.

