

Fc epsilon RI alpha antibody



Catalog Number: 110567

Product name

Fc epsilon RI alpha antibody

Specificity

Human; other species not tested.

Antibody description

Fc epsilon RI alpha Rabbit Polyclonal antibody. Positive WB detected in human spleen tissue, PC-3 cells. Positive IHC detected in human prostate cancer tissue. Observed molecular weight by Western-blot: 55 kDa

Preparation

This antibody was obtained by immunization of Fc epsilon RI alpha recombinant protein (Accession Number: NM_001387280). Purification method: Antigen affinity purified.

Formulation

PBS with 0.1% sodium azide and 50% glycerol pH 7.3.

Storage

Store at -20°C. DO NOT ALIQUOT

Clonality

Polyclonal

Ig Type

Rabbit IgG

Applications

ELISA, WB, IHC

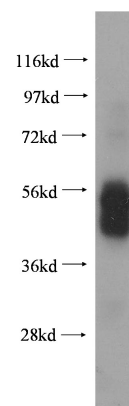
Dilutions

Recommended Dilution:

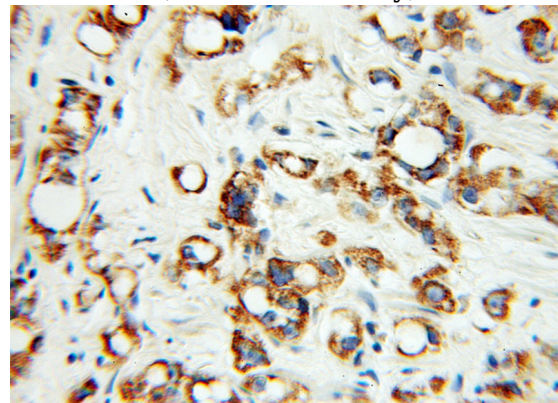
WB: 1:200-1:2000

IHC: 1:20-1:200

Validations



human spleen tissue were subjected to SDS PAGE followed by western blot with Catalog No:110567(FCER1A antibody) at dilution of 1:800



Immunohistochemical of paraffin-embedded human prostate cancer using Catalog No:110567(FCER1A antibody) at dilution of 1:100 (under 10x lens)