

FBXL13 antibody

Catalog Number: 110541

Product name

FBXL13 antibody

IHC: 1:20-1:200

IF: 1:50-1:500

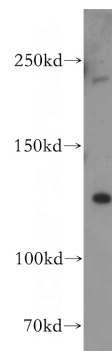
Specificity

Human, Mouse, Rat; other species not tested.

Antibody description

FBXL13 Rabbit Polyclonal antibody. Positive IHC detected in human liver tissue. Positive IF detected in HeLa cells. Positive WB detected in HeLa cells. Observed molecular weight by Western-blot: 120 kDa

Validations



Preparation

This antibody was obtained by immunization of FBXL13 recombinant protein (Accession Number: NM_001287150). Purification method: Antigen affinity purified.

HeLa cells were subjected to SDS PAGE followed by western blot with Catalog No:110541(FBXL13 antibody) at dilution of 1:500

Formulation

PBS with 0.02% sodium azide and 50% glycerol pH 7.3.

Storage

Store at -20°C. DO NOT ALIQUOT

Clonality

Polyclonal

Ig Type

Rabbit IgG

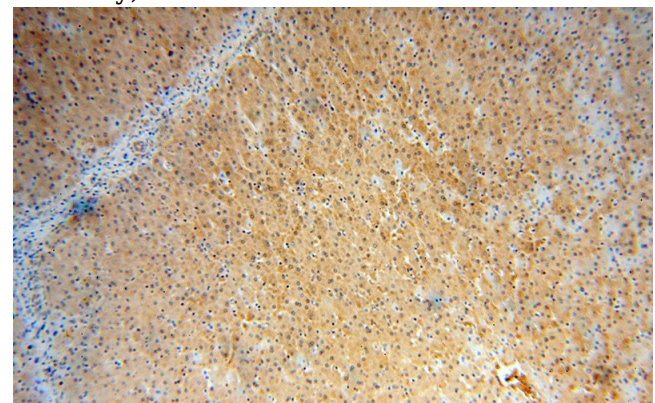
Applications

ELISA, WB, IHC, IF

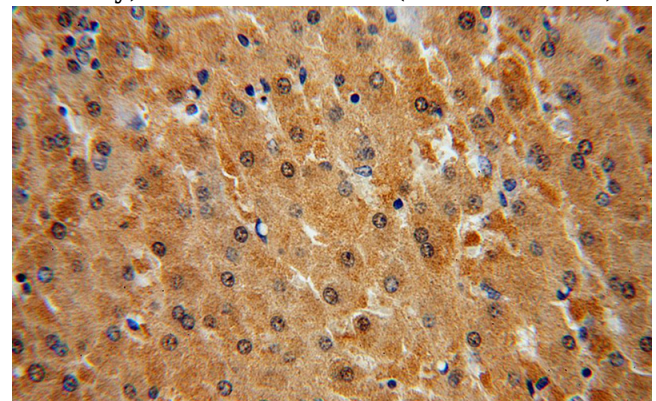
Dilutions

Recommended Dilution:

WB: 1:200-1:2000



Immunohistochemical of paraffin-embedded human liver using Catalog No:110541(FBXL13 antibody) at dilution of 1:50 (under 10x lens)

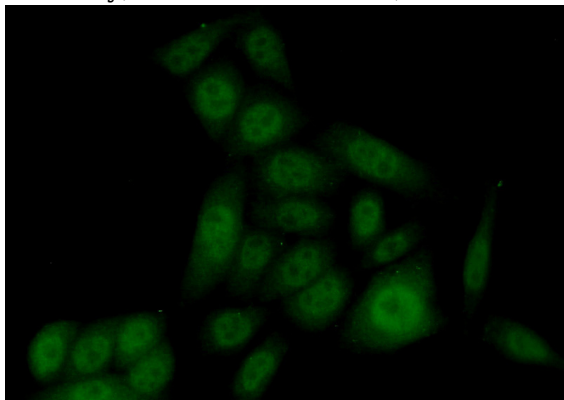


Immunohistochemical of paraffin-embedded human liver using Catalog No:110541(FBXL13

FBXL13 antibody

Catalog Number: 110541

antibody) at dilution of 1:50 (under 40x lens)



Immunofluorescent analysis of (10% Formaldehyde) fixed HeLa cells using Catalog No:110541(FBXL13 Antibody) at dilution of 1:50 and Alexa Fluor 488-conjugated AffiniPure Goat Anti-Rabbit IgG(H+L)