

FBF1 antibody



Catalog Number: 110535

Product name

FBF1 antibody

WB: 1:200-1:2000

IP: 1:200-1:1000

Specificity

Human, Mouse; other species not tested.

IHC: 1:20-1:200

IF: 1:10-1:100

Antibody description

FBF1 Rabbit Polyclonal antibody. Positive IP detected in mouse liver tissue. Positive WB detected in mouse liver tissue, COLO 320 cells, L02 cells. Positive IHC detected in human colon cancer tissue. Positive IF detected in HepG2 cells. Observed molecular weight by Western-blot: 130 kDa, 90 kDa, 70 kDa

Preparation

This antibody was obtained by immunization of FBF1 recombinant protein (Accession Number: BC023549). Purification method: Antigen affinity purified.

Formulation

PBS with 0.1% sodium azide and 50% glycerol pH 7.3.

Storage

Store at -20°C. DO NOT ALIQUOT

Clonality

Polyclonal

Ig Type

Rabbit IgG

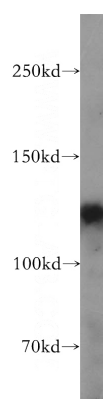
Applications

ELISA, IHC, WB, IF, IP

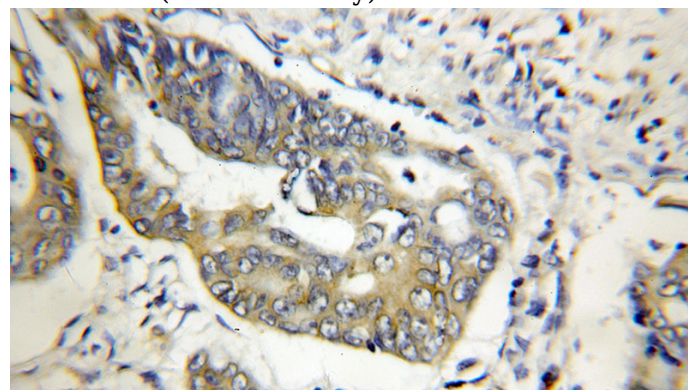
Dilutions

Recommended Dilution:

Validations



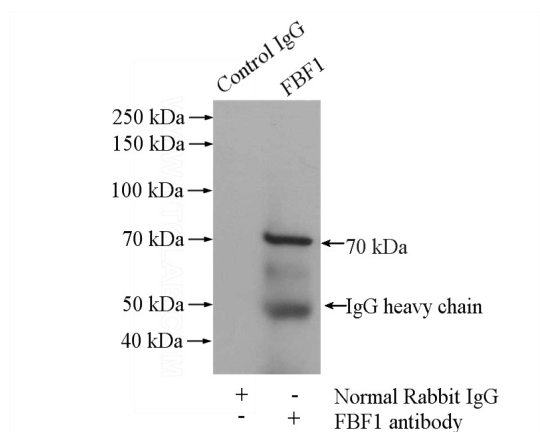
mouse liver tissue were subjected to SDS PAGE followed by western blot with Catalog No:110535(FBF1 antibody) at dilution of 1:500



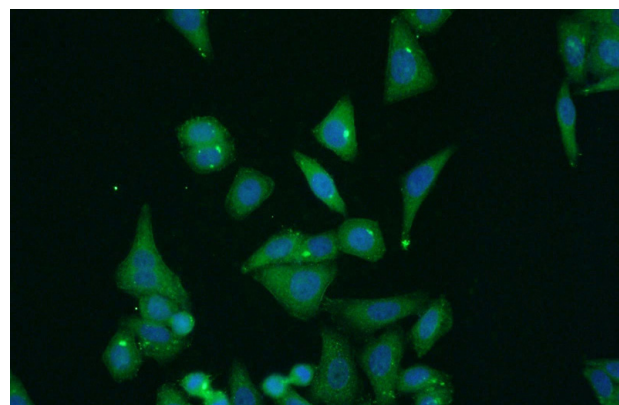
Immunohistochemical of paraffin-embedded human colon cancer using Catalog No:110535(FBF1 antibody) at dilution of 1:50 (under 10x lens)

FBF1 antibody

Catalog Number: 110535



IP Result of anti-FBF1 (IP:Catalog No:110535, 4ug; Detection:Catalog No:110535 1:300) with mouse liver tissue lysate 4000ug.



Immunofluorescent analysis of HepG2 cells using Catalog No:110535(FBF1 Antibody) at dilution of 1:25 and Alexa Fluor 488-conjugated AffiniPure Goat Anti-Rabbit IgG(H+L)