

EXOSC2 antibody



Catalog Number: 110509

Product name

EXOSC2 antibody

IP: 1:500-1:5000

IHC: 1:20-1:200

Specificity

Human, Mouse, Rat; other species not tested.

IF: 1:20-1:200

Antibody description

EXOSC2 Rabbit Polyclonal antibody. Positive WB detected in HeLa cells, HepG2 cells, Jurkat cells, MCF7 cells. Positive IP detected in HeLa cells. Positive IF detected in MCF-7 cells. Positive IHC detected in human skin cancer tissue. Observed molecular weight by Western-blot: 30-33 kDa

Preparation

This antibody was obtained by immunization of EXOSC2 recombinant protein (Accession Number: NM_014285). Purification method: Antigen affinity purified.

Formulation

PBS with 0.02% sodium azide and 50% glycerol pH 7.3.

Storage

Store at -20°C. DO NOT ALIQUOT

Clonality

Polyclonal

Ig Type

Rabbit IgG

Applications

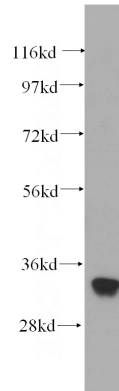
ELISA, WB, IHC, IF, IP

Dilutions

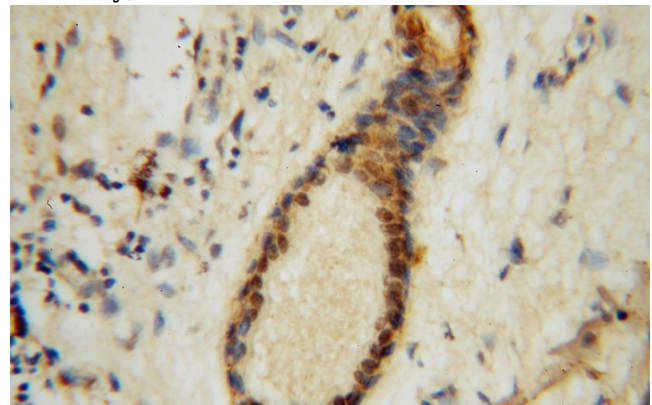
Recommended Dilution:

WB: 1:500-1:5000

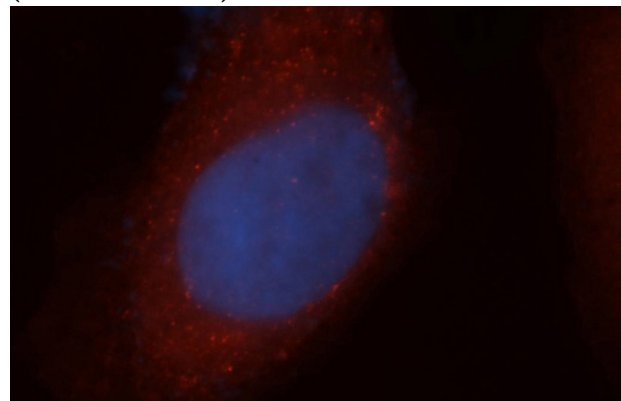
Validations



HeLa cells were subjected to SDS PAGE followed by western blot with Catalog No:110509(EXOSC2 antibody) at dilution of 1:500



Immunohistochemical of paraffin-embedded human skin cancer using Catalog No:110509(EXOSC2 antibody) at dilution of 1:100 (under 40x lens)

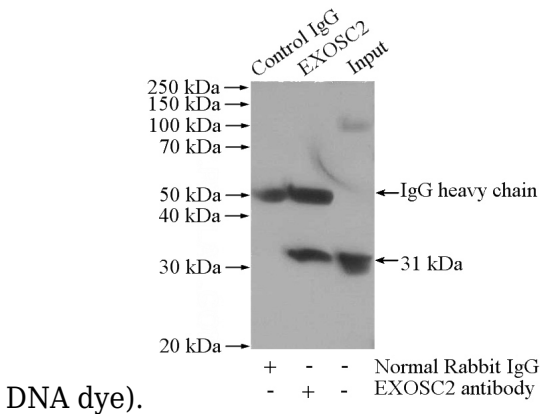


EXOSC2 antibody



Catalog Number: 110509

Immunofluorescent analysis of MCF-7 cells, using EXOSC2 antibody Catalog No:110509 at 1:50 dilution and Rhodamine-labeled goat anti-rabbit IgG (red). Blue pseudocolor = DAPI (fluorescent



IP Result of anti-EXOSC2 (IP:Catalog No:110509, 4ug; Detection:Catalog No:110509 1:1000) with HeLa cells lysate 1080ug.