

EXOSC10 antibody



Catalog Number: 110507

Product name

EXOSC10 antibody

Specificity

Human, Mouse; other species not tested.

Antibody description

EXOSC10 Rabbit Polyclonal antibody. Positive IP detected in HeLa cells. Positive WB detected in HeLa cells, mouse spleen tissue. Positive IF detected in HeLa cells, NIH/3T3 cells. Positive IHC detected in human spleen tissue, human brain tissue, human heart tissue, human kidney tissue, human liver tissue, human lung tissue, human ovary tissue, human placenta tissue, human skin tissue, human testis tissue. Observed molecular weight by Western-blot: 100 kDa

Preparation

This antibody was obtained by immunization of EXOSC10 recombinant protein (Accession Number: NM_001001998). Purification method: Antigen affinity purified.

Formulation

PBS with 0.02% sodium azide and 50% glycerol pH 7.3.

Storage

Store at -20°C. DO NOT ALIQUOT

Clonality

Polyclonal

Ig Type

Rabbit IgG

Applications

ELISA, WB, IHC, IF, IP

Dilutions

Recommended Dilution:

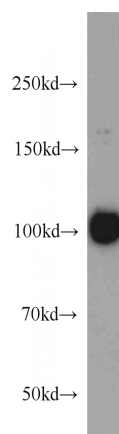
WB: 1:500-1:5000

IP: 1:200-1:2000

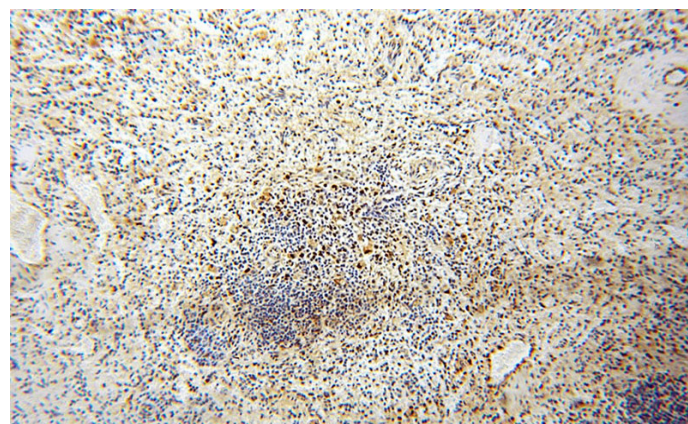
IHC: 1:20-1:200

IF: 1:20-1:200

Validations



HeLa cells were subjected to SDS PAGE followed by western blot with Catalog No:110507(EXOSC10 antibody) at dilution of 1:1000

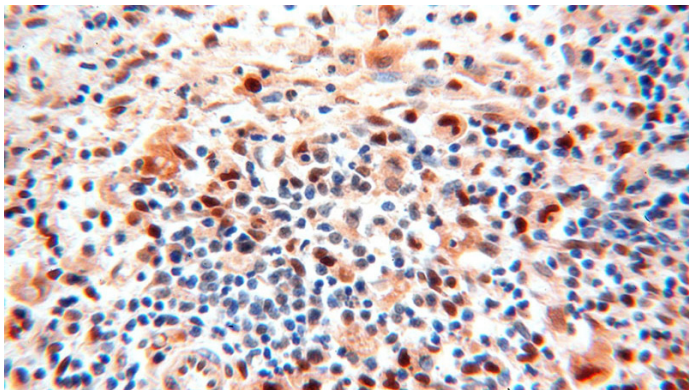


Immunohistochemical of paraffin-embedded human spleen using Catalog No:110507(EXOSC10 antibody) at dilution of 1:50 (under 10x lens)

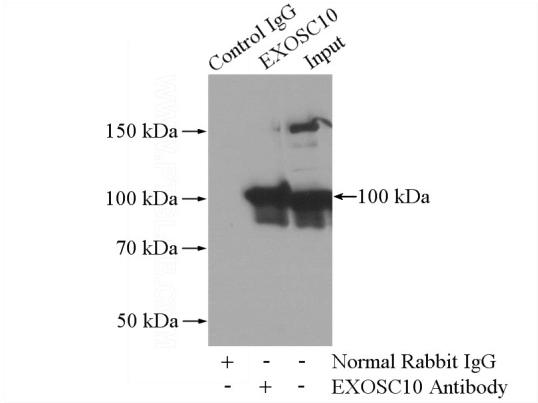
EXOSC10 antibody



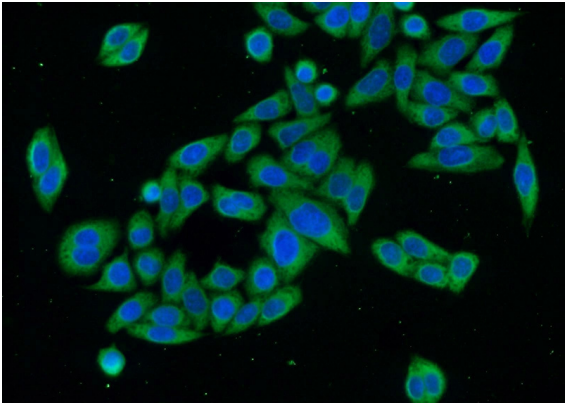
Catalog Number: 110507



Immunohistochemical of paraffin-embedded human spleen using Catalog No:110507(EXOSC10 antibody) at dilution of 1:50 (under 40x lens)



IP Result of anti-EXOSC10 (IP:Catalog No:110507, 4ug; Detection:Catalog No:110507 1:700) with HeLa cells lysate 1200ug.



Immunofluorescent analysis of HeLa cells using Catalog No:110507(EXOSC10 Antibody) at dilution of 1:50 and Alexa Fluor 488-conjugated AffiniPure Goat Anti-Rabbit IgG(H+L)