

ETFDH antibody



Catalog Number: 110485

Product name

ETFDH antibody

Recommended Dilution:

WB: 1:500-1:5000

Specificity

Human, Mouse, Rat; other species not tested.

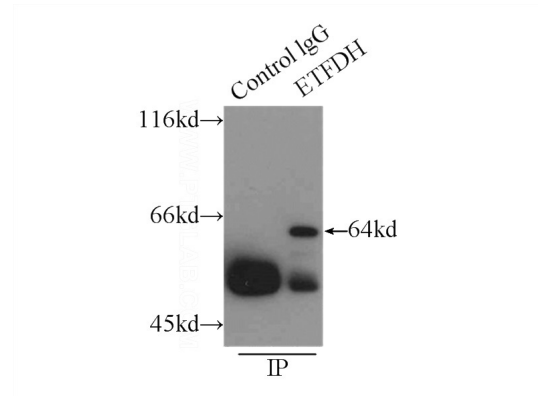
IP: 1:200-1:2000

IHC: 1:20-1:200

Antibody description

ETFDH Rabbit Polyclonal antibody. Positive IHC detected in human prostate cancer tissue, human kidney tissue, human liver tissue. Positive WB detected in mouse brain tissue, HEK-293 cells, human liver tissue, mouse kidney tissue, mouse liver tissue, mouse skeletal muscle tissue, rat brain tissue. Positive IP detected in mouse brain tissue. Observed molecular weight by Western-blot: 64kd

Validations



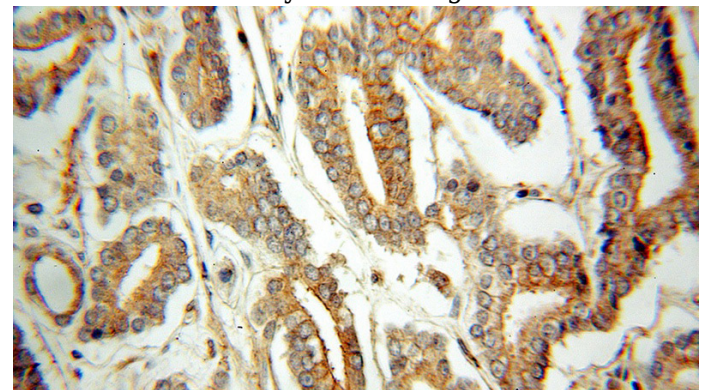
Preparation

This antibody was obtained by immunization of ETFDH recombinant protein (Accession Number: NM_004453). Purification method: Antigen affinity purified.

IP Result of anti-ETFDH (IP:Catalog No:110485, 3ug; Detection:Catalog No:110485 1:500) with mouse brain tissue lysate 8000ug.

Formulation

PBS with 0.1% sodium azide and 50% glycerol pH 7.3.



Storage

Store at -20°C. DO NOT ALIQUOT

Clonality

Polyclonal

Immunohistochemical of paraffin-embedded human prostate cancer using Catalog No:110485(ETFDH antibody) at dilution of 1:50

Ig Type

Rabbit IgG

Applications

ELISA, IHC, IP, WB

Dilutions

ETFDH antibody



Catalog Number: 110485

mouse brain tissue were subjected to SDS PAGE
followed by western blot with Catalog
No:110485(ETFDH Antibody) at dilution of 1:1000

