

# ETF1 antibody

Catalog Number: 110482

## Product name

ETF1 antibody

IHC: 1:20-1:200

IF: 1:10-1:100

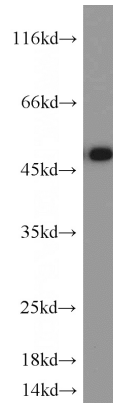
## Specificity

Human, Mouse; other species not tested.

## Validations

## Antibody description

ETF1 Rabbit Polyclonal antibody. Positive WB detected in HEK-293 cells, mouse kidney tissue, mouse testis tissue. Positive IF detected in Hela cells. Positive IHC detected in human pancreas cancer tissue, human testis tissue. Observed molecular weight by Western-blot: 45-48kd



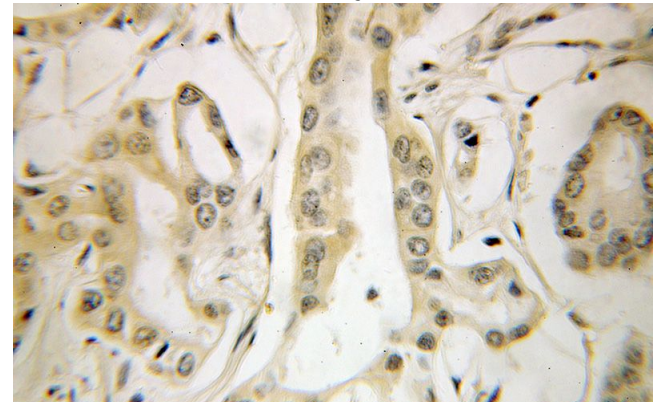
## Preparation

This antibody was obtained by immunization of ETF1 recombinant protein (Accession Number: XM\_005271921). Purification method: Antigen affinity purified.

HEK-293 cells were subjected to SDS PAGE followed by western blot with Catalog No:110482(ETF1 antibody) at dilution of 1:800

## Formulation

PBS with 0.1% sodium azide and 50% glycerol pH 7.3.



## Storage

Store at -20°C. DO NOT ALIQUOT

## Clonality

Polyclonal

Immunohistochemical of paraffin-embedded human pancreas cancer using Catalog No:110482(ETF1 antibody) at dilution of 1:100 (under 40x lens)

## Ig Type

Rabbit IgG

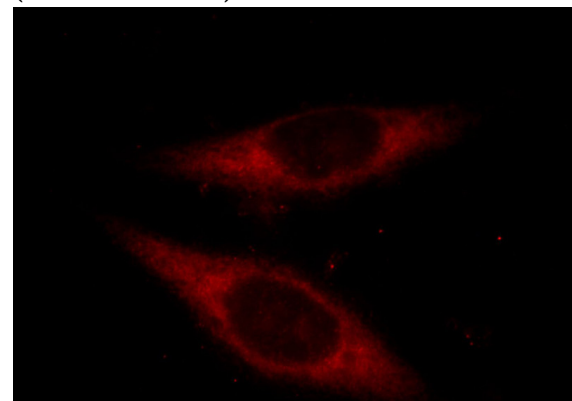
## Applications

ELISA, WB, IHC, IF

## Dilutions

Recommended Dilution:

WB: 1:200-1:2000



Immunofluorescent analysis of Hela cells, using

# ETF1 antibody



Catalog Number: 110482

---

ETF1 antibody Catalog No:110482 at 1:25 dilution and Rhodamine-labeled goat anti-rabbit IgG (red).