

# ESRRG antibody



Catalog Number: 110480

## Product name

ESRRG antibody

## Immunogen

[Human ESRRG Recombinant protein \(GST tag\)](#)

## Specificity

Human, Mouse, Rat; other species not tested.

## Antibody description

ESRRG Rabbit Polyclonal antibody. Positive WB detected in human spleen tissue, human kidney tissue. Observed molecular weight by Western-blot: 51kd

## Preparation

This antibody was obtained by immunization of ESRRG recombinant protein (Accession Number: XM\_017000632). Purification method: Antigen affinity purified.

## Formulation

PBS with 0.02% sodium azide and 50% glycerol pH 7.3.

## Storage

Store at -20°C. DO NOT ALIQUOT

## Clonality

Polyclonal

## Ig Type

Rabbit IgG

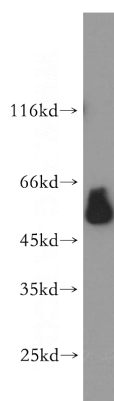
## Applications

ELISA, WB

## Dilutions

Recommended Dilution:  
WB: 1:1000-1:10000

## Validations



human spleen tissue were subjected to SDS PAGE followed by western blot with Catalog No:110480(ESRRG antibody) at dilution of 1:1000