

# ESRP1 antibody

Catalog Number: 110477

## Product name

ESRP1 antibody

## Specificity

Human, Mouse; other species not tested.

## Antibody description

ESRP1 Rabbit Polyclonal antibody. Positive WB detected in COLO 320 cells, mouse lung tissue. Positive IP detected in COLO 320 cells. Observed molecular weight by Western-blot: 76 kDa

## Preparation

This antibody was obtained by immunization of ESRP1 recombinant protein (Accession Number: NM\_001034915). Purification method: Antigen affinity purified.

## Formulation

PBS with 0.1% sodium azide and 50% glycerol pH 7.3.

## Storage

Store at -20°C. DO NOT ALIQUOT

## Clonality

Polyclonal

## Ig Type

Rabbit IgG

## Applications

ELISA, WB, IP

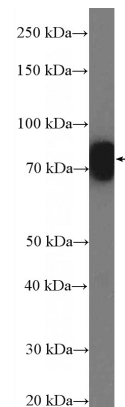
## Dilutions

Recommended Dilution:

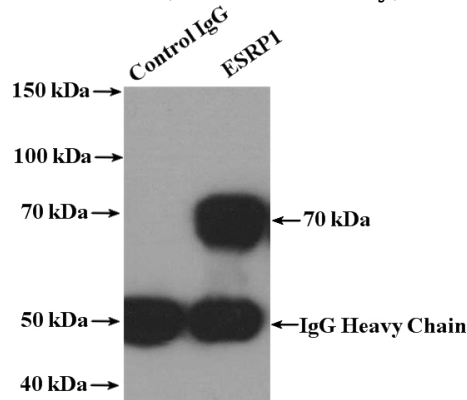
WB: 1:500-1:5000

IP: 1:200-1:1000

## Validations



COLO 320 cells were subjected to SDS PAGE followed by western blot with Catalog No:110477(ESRP1 Antibody) at dilution of 1:1000



IP Result of anti-ESRP1 (IP:Catalog No:110477, 4ug; Detection:Catalog No:110477 1:300) with COLO 320 cells lysate 4000ug.