

# ESR2 antibody

Catalog Number: 110474

## Product name

ESR2 antibody

## Specificity

Human, Mouse, Rat; other species not tested.

## Antibody description

ESR2 Rabbit Polyclonal antibody. Positive WB detected in NIH/3T3 cells, human brain tissue, mouse brain tissue, mouse testis tissue, PC-3 cells, SH-SY5Y cells. Positive IHC detected in human cervix tissue, human ovary tumor tissue. Observed molecular weight by Western-blot: 50 kDa

## Preparation

This antibody was obtained by immunization of ESR2 recombinant protein (Accession Number: XM\_047431078). Purification method: Antigen affinity purified.

## Formulation

PBS with 0.02% sodium azide and 50% glycerol pH 7.3.

## Storage

Store at -20°C. DO NOT ALIQUOT

## Clonality

Polyclonal

## Ig Type

Rabbit IgG

## Applications

ELISA, IHC, WB

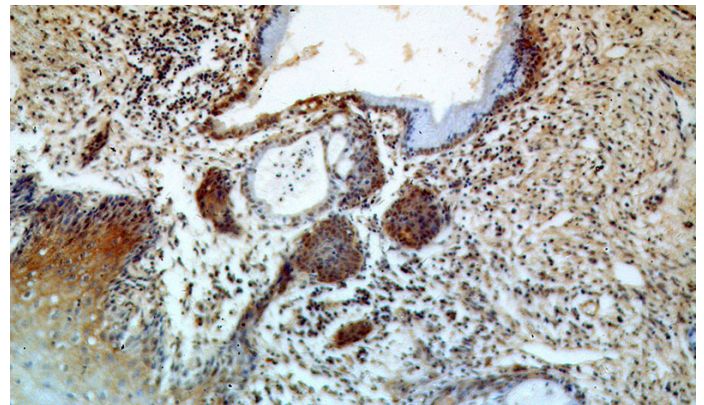
## Dilutions

Recommended Dilution:

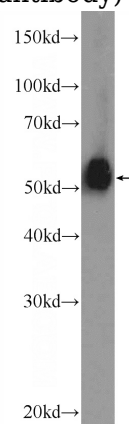
WB: 1:1000-1:10000

IHC: 1:20-1:200

## Validations



Immunohistochemical of paraffin-embedded human cervix using Catalog No:110474(ESR2 antibody) at dilution of 1:50 (under 10x lens)



NIH/3T3 cells were subjected to SDS PAGE followed by western blot with Catalog No:110474(ESR2 Antibody) at dilution of 1:2000