

FAM111B antibody



Catalog Number: 110459

Product name

FAM111B antibody

IHC: 1:20-1:200

IF: 1:10-1:100

Specificity

Human; other species not tested.

Antibody description

FAM111B Rabbit Polyclonal antibody. Positive IHC detected in human colon tissue, human prostate cancer tissue. Positive IF detected in HeLa cells. Positive WB detected in HeLa cells, human testis tissue, MCF7 cells. Observed molecular weight by Western-blot: 135kd

Preparation

This antibody was obtained by immunization of Peptide (Accession Number: NM_198947).
Purification method: Antigen affinity purified.

Formulation

PBS with 0.02% sodium azide and 50% glycerol
pH 7.3.

Storage

Store at -20°C. DO NOT ALIQUOT

Clonality

Polyclonal

Ig Type

Rabbit IgG

Applications

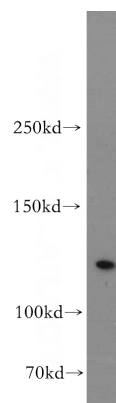
ELISA, WB, IF, IHC

Dilutions

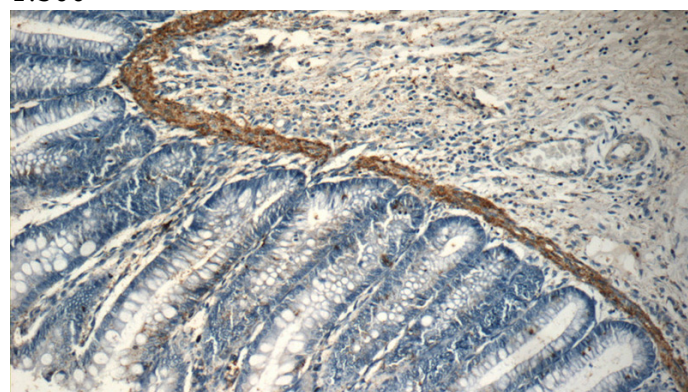
Recommended Dilution:

WB: 1:200-1:2000

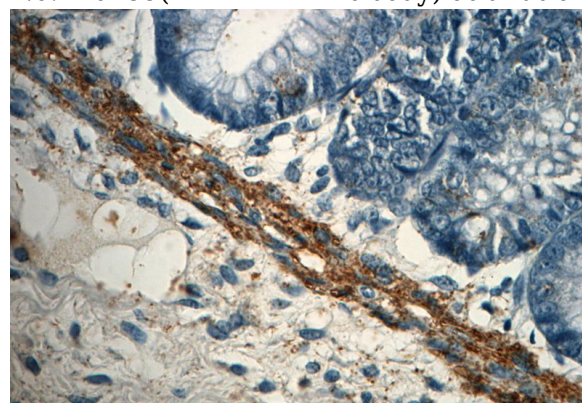
Validations



HeLa cells were subjected to SDS PAGE followed by western blot with Catalog No:110459(FAM111B antibody) at dilution of 1:500



Immunohistochemistry of paraffin-embedded human colon slide using Catalog No:110459(FAM111B Antibody) at dilution of 1:50



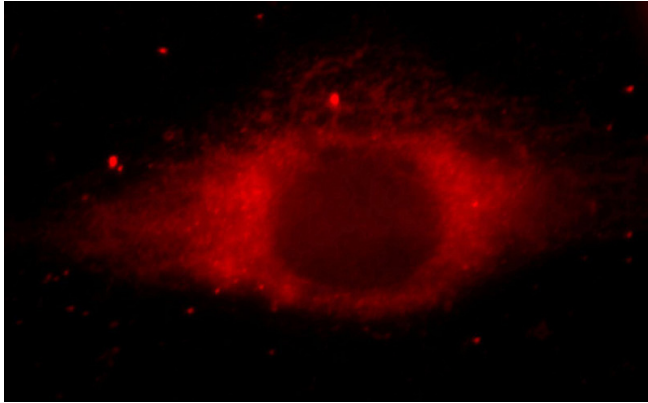
Immunohistochemistry of paraffin-embedded

FAM111B antibody



Catalog Number: 110459

human colon slide using Catalog
No:110459(FAM111B Antibody) at dilution of 1:50



Immunofluorescent analysis of Hela cells, using
FAM111B antibody Catalog No:110459 at 1:25
dilution and Rhodamine-labeled goat anti-rabbit
IgG (red).