

# F4/80 antibody

Catalog Number: 110429

## Product name

F4/80 antibody

## Specificity

Human, Mouse; other species not tested.

## Antibody description

F4/80 Rabbit Polyclonal antibody. Positive IHC detected in mouse spleen tissue, human hepat°Cirrhosis tissue. Positive WB detected in Jurkat cells, HepG2 cells, L02 cells. Observed molecular weight by Western-blot: 130-140 kDa

## Preparation

This antibody was obtained by immunization of Peptide (Accession Number: NM\_010130). Purification method: Antigen affinity purified.

## Formulation

PBS with 0.02% sodium azide and 50% glycerol pH 7.3.

## Storage

Store at -20°C. DO NOT ALIQUOT

## Clonality

Polyclonal

## Ig Type

Rabbit IgG

## Applications

ELISA, WB, IHC

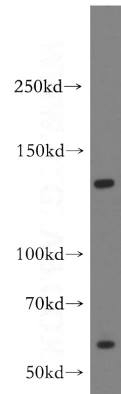
## Dilutions

Recommended Dilution:

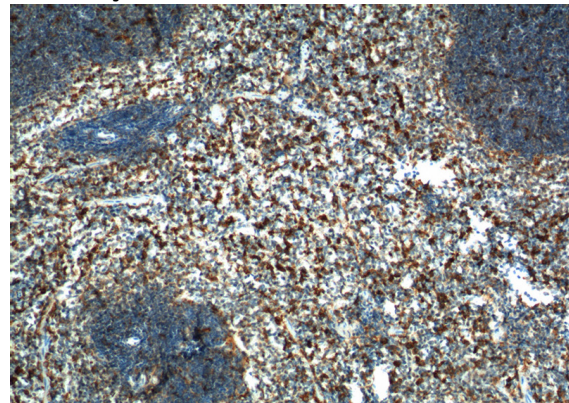
WB: 1:200-1:2000

IHC: 1:50-1:500

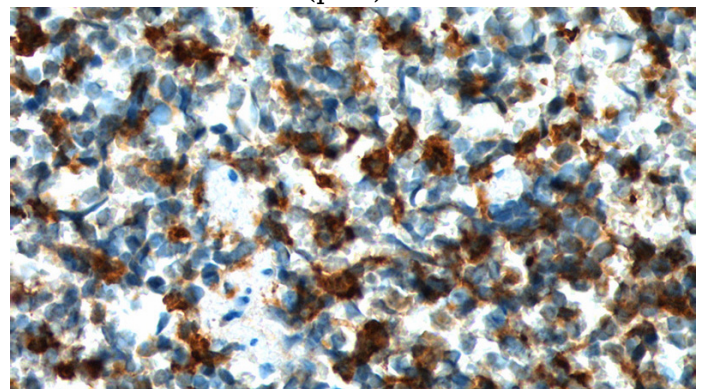
## Validations



Jurkat cells were subjected to SDS PAGE followed by western blot with Catalog No:110429(F4-80 antibody) at dilution of 1:500



Immunohistochemistry of paraffin-embedded mouse spleen tissue slide using Catalog No:110429(F4/80 Antibody) at dilution of 1:200 (under 10x lens). heat mediated antigen retrieved with Tris-EDTA buffer(pH9).



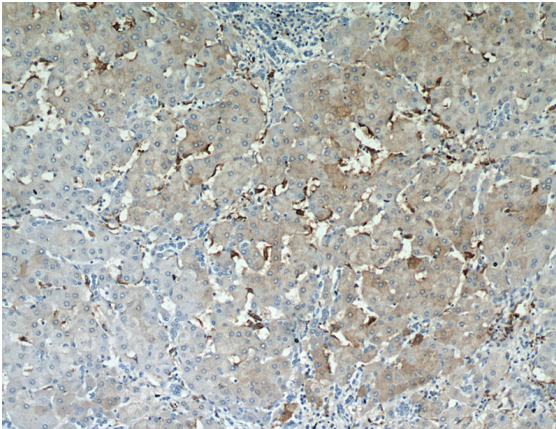
Immunohistochemistry of paraffin-embedded mouse spleen tissue slide using Catalog No:110429(F4/80 Antibody) at dilution of 1:200 (under 40x lens). heat mediated antigen retrieved

# F4/80 antibody

Catalog Number: 110429

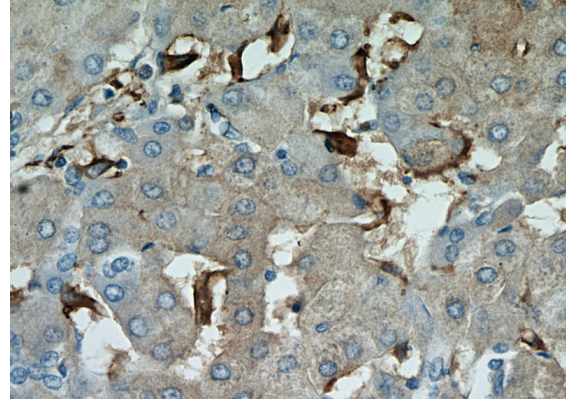
---

with Tris-EDTA buffer(pH9).



Immunohistochemical of paraffin-embedded human hepatocirrhosis using Catalog No:110429(F4-80 antibody) at dilution of 1:50

(under 10x lens)



Immunohistochemical of paraffin-embedded human hepatocirrhosis using Catalog No:110429(F4-80 antibody) at dilution of 1:50 (under 40x lens)