

# F2RL3 antibody



Catalog Number: 110428

## Product name

F2RL3 antibody

Recommended Dilution:

WB: 1:500-1:5000

## Immunogen

IHC: 1:20-1:200

[Human F2RL3 Recombinant protein \(His tag\)](#)

## Specificity

Human, Mouse; other species not tested.

## Antibody description

F2RL3 Rabbit Polyclonal antibody. Positive WB detected in mouse lung tissue, mouse pancreas tissue. Positive FC detected in HeLa cells. Positive IHC detected in mouse lung tissue. Observed molecular weight by Western-blot: 41 kDa

## Preparation

This antibody was obtained by immunization of F2RL3 recombinant protein (Accession Number: NM\_003950). Purification method: Antigen affinity purified.

## Formulation

PBS with 0.1% sodium azide and 50% glycerol pH 7.3.

## Storage

Store at -20°C. DO NOT ALIQUOT

## Clonality

Polyclonal

## Ig Type

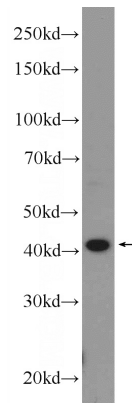
Rabbit IgG

## Applications

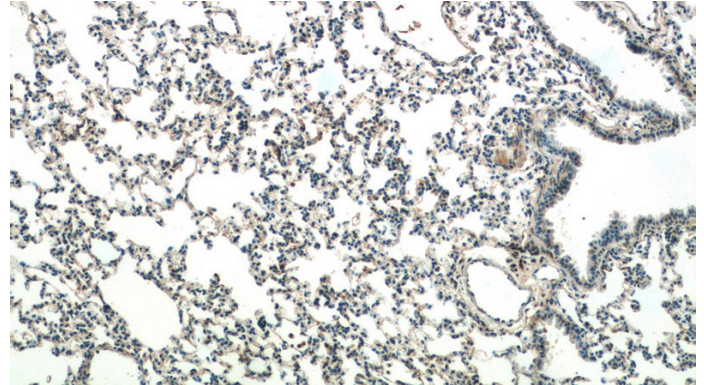
ELISA, WB, IHC, FC

## Dilutions

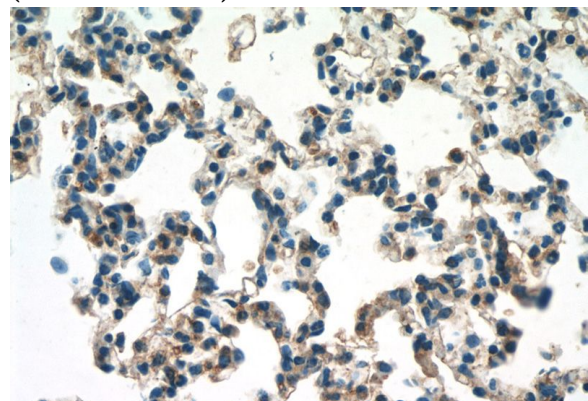
## Validations



mouse lung tissue were subjected to SDS PAGE followed by western blot with Catalog No:110428(F2RL3 Antibody) at dilution of 1:1000



Immunohistochemistry of paraffin-embedded mouse lung tissue slide using Catalog No:110428(F2RL3 Antibody) at dilution of 1:50 (under 10x lens)



# F2RL3 antibody



Catalog Number: 110428

Immunohistochemistry of paraffin-embedded mouse lung tissue slide using Catalog No:110428(F2RL3 Antibody) at dilution of 1:50 (under 40x lens)

1X10<sup>6</sup> HeLa cells were stained with 0.2ug F2RL3 antibody (Catalog No:110428, red) and control antibody (blue). Fixed with 4% PFA blocked with 3% BSA (30 min). Alexa Fluor 488-conjugated AffiniPure Goat Anti-Rabbit IgG(H+L) with dilution 1:1500.

