

Ezrin antibody



Catalog Number: 110426

Product name

Ezrin antibody

IHC: 1:100-1:600

IF: 1:20-1:200

Specificity

Human, Mouse; other species not tested.

Antibody description

Ezrin Rabbit Polyclonal antibody. Positive WB detected in HeLa cells. Positive IF detected in HeLa cells. Positive IHC detected in mouse stomach tissue, human small intestine tissue. Observed molecular weight by Western-blot: 70-75 kDa

Preparation

This antibody was obtained by immunization of Ezrin recombinant protein (Accession Number: NM_003379). Purification method: Antigen affinity purified.

Formulation

PBS with 0.1% sodium azide and 50% glycerol pH 7.3.

Storage

Store at -20°C. DO NOT ALIQUOT

Clonality

Polyclonal

Ig Type

Rabbit IgG

Applications

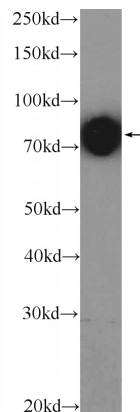
ELISA, WB, IF, IHC

Dilutions

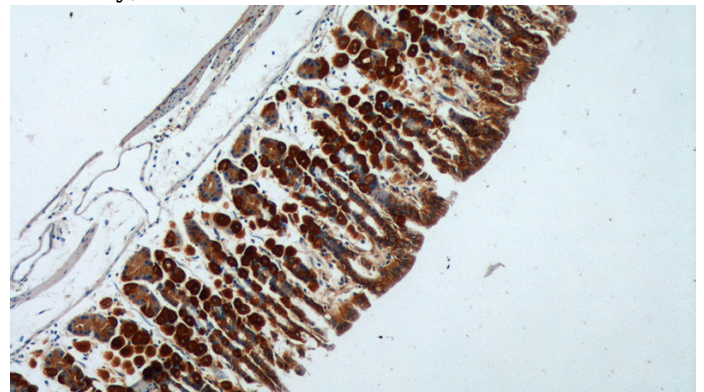
Recommended Dilution:

WB: 1:2000-1:20000

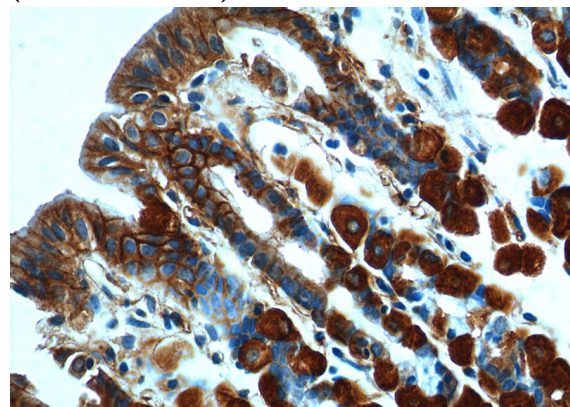
Validations



HeLa cells were subjected to SDS PAGE followed by western blot with Catalog No:110426(Ezrin Antibody) at dilution of 1:5000



Immunohistochemistry of paraffin-embedded mouse stomach tissue slide using Catalog No:110426(Ezrin Antibody) at dilution of 1:200 (under 10x lens).



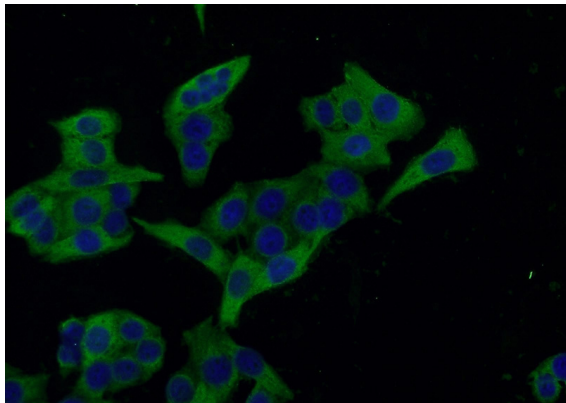
Immunohistochemistry of paraffin-embedded

Ezrin antibody



Catalog Number: 110426

mouse stomach tissue slide using Catalog No:110426(Ezrin Antibody) at dilution of 1:200 (under 40x lens).



Immunofluorescent analysis of HeLa cells using Catalog No:110426(Ezrin Antibody) at dilution of 1:50 and Alexa Fluor 488-conjugated AffiniPure Goat Anti-Rabbit IgG(H+L)