

# EXOSC9 antibody



Catalog Number: 110415

## Product name

EXOSC9 antibody

IHC: 1:20-1:200

IF: 1:10-1:100

## Specificity

Human; other species not tested.

## Antibody description

EXOSC9 Rabbit Polyclonal antibody. Positive WB detected in HepG2 cells, HEK-293 cells, MCF-7 cells. Positive IHC detected in human prostate hyperplasia tissue. Positive IF detected in HeLa cells. Observed molecular weight by Western-blot: 65 kDa

## Preparation

This antibody was obtained by immunization of EXOSC9 recombinant protein (Accession Number: NM\_005033). Purification method: Antigen affinity purified.

## Formulation

PBS with 0.1% sodium azide and 50% glycerol pH 7.3.

## Storage

Store at -20°C. DO NOT ALIQUOT

## Clonality

Polyclonal

## Ig Type

Rabbit IgG

## Applications

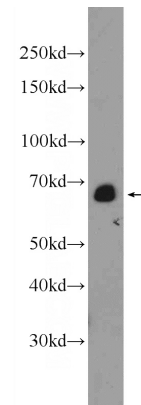
ELISA, IHC, IF, WB

## Dilutions

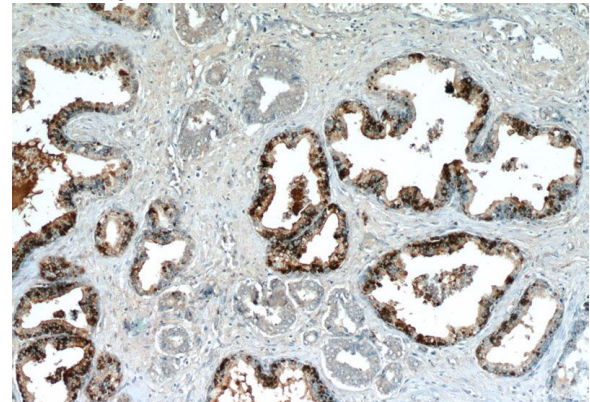
Recommended Dilution:

WB: 1:500-1:5000

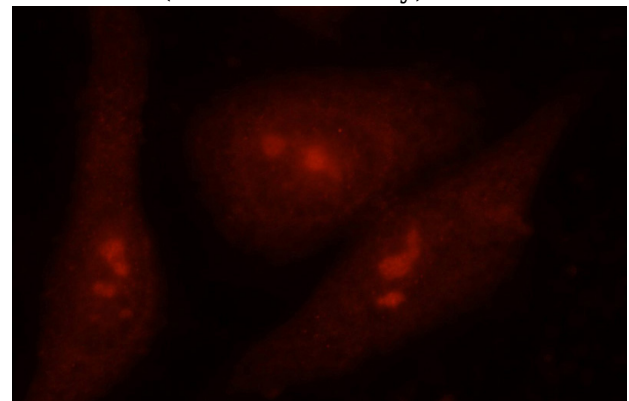
## Validations



HepG2 cells were subjected to SDS PAGE followed by western blot with Catalog No:110415(EXOSC9 Antibody) at dilution of 1:1000



Immunohistochemistry of paraffin-embedded human prostate hyperplasia slide using Catalog No:110415(EXOSC9 Antibody) at dilution of 1:50



Immunofluorescent analysis of HeLa cells using Catalog No:110415(EXOSC9 Antibody) at dilution

# EXOSC9 antibody



Catalog Number: 110415

---

of 1:25 and Rhodamine-Goat anti-Rabbit IgG