

# EXOSC5 antibody

Catalog Number: 110412

## Product name

EXOSC5 antibody

## Specificity

human, rat; other species not tested.

## Antibody description

EXOSC5 Rabbit Polyclonal antibody. Positive WB detected in K-562 cells, HEK-293 cells, HeLa cells, Raji cells, rat kidney tissue. Positive IHC detected in human breast cancer. Observed molecular weight by Western-blot: 28-30 kDa

## Preparation

This antibody was obtained by immunization of EXOSC5 recombinant protein (Accession Number: NM\_020158). Purification method: Antigen affinity purified.

## Formulation

PBS with 0.02% sodium azide and 50% glycerol pH 7.3.

## Storage

Store at -20°C. DO NOT ALIQUOT

## Clonality

Polyclonal

## Ig Type

Rabbit IgG

## Applications

ELISA, WB, IHC

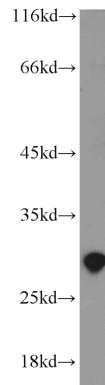
## Dilutions

Recommended Dilution:

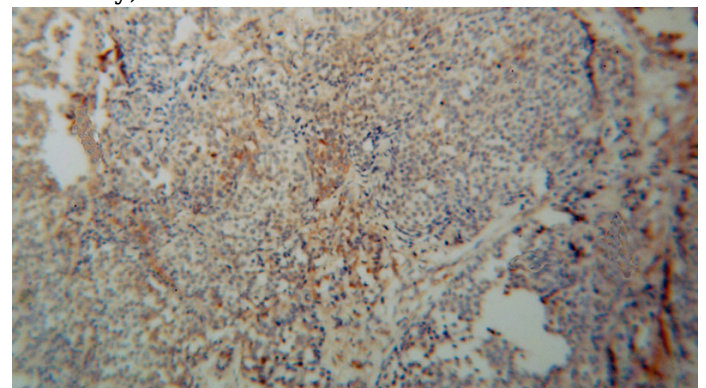
WB: 1:200-1:2000

IHC: 1:20-1:200

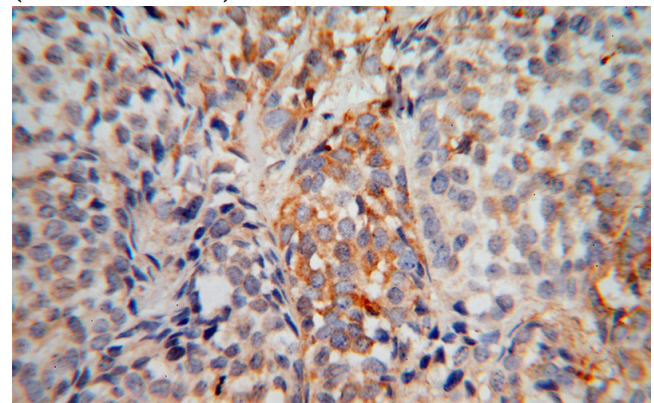
## Validations



K-562 cells were subjected to SDS PAGE followed by western blot with Catalog No:110412(EXOSC5 antibody) at dilution of 1:500



Immunohistochemical of paraffin-embedded human breast cancer using Catalog No:110412(EXOSC5 antibody) at dilution of 1:50 (under 10x lens)



Immunohistochemical of paraffin-embedded human breast cancer using Catalog No:110412(EXOSC5 antibody) at dilution of 1:50

# EXOSC5 antibody



Catalog Number: 110412

---

(under 40x lens)