

EXOSC3 antibody

Catalog Number: 110410

Product name

EXOSC3 antibody

IP: 1:200-1:2000

IHC: 1:20-1:200

Specificity

Human, Mouse, Rat; other species not tested.

Antibody description

EXOSC3 Rabbit Polyclonal antibody. Positive IP detected in A2780 cells. Positive WB detected in PC-3 cells, A2780 cells. Positive IHC detected in human prostate cancer tissue. Observed molecular weight by Western-blot: 31 kDa

Preparation

This antibody was obtained by immunization of EXOSC3 recombinant protein (Accession Number: NM_016042). Purification method: Antigen affinity purified.

Formulation

PBS with 0.02% sodium azide and 50% glycerol pH 7.3.

Storage

Store at -20°C. DO NOT ALIQUOT

Clonality

Polyclonal

Ig Type

Rabbit IgG

Applications

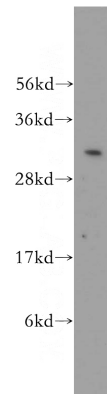
ELISA, WB, IHC, IP

Dilutions

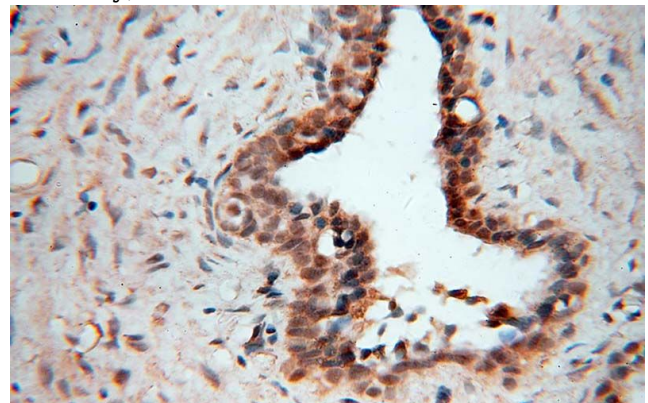
Recommended Dilution:

WB: 1:200-1:2000

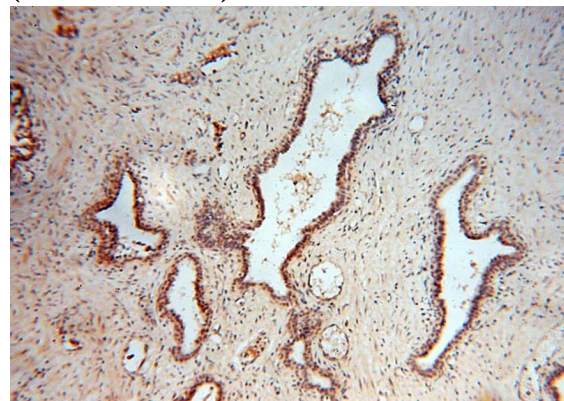
Validations



PC-3 cells were subjected to SDS PAGE followed by western blot with Catalog No:110410(EXOSC3 antibody) at dilution of 1:400



Immunohistochemical of paraffin-embedded human prostate cancer using Catalog No:110410(EXOSC3 antibody) at dilution of 1:50 (under 40x lens)



Immunohistochemical of paraffin-embedded

EXOSC3 antibody

Catalog Number: 110410

human prostate cancer using Catalog No:110410(EXOSC3 antibody) at dilution of 1:50 (under 10x lens)

IP Result of anti-EXOSC3 (IP:Catalog No:110410, 4ug; Detection:Catalog No:110410 1:500) with A2780 cells lysate 800ug.

