

ERAB antibody



Catalog Number: 110398

Product name

ERAB antibody

Recommended Dilution:

WB: 1:500-1:5000

Specificity

Human, Mouse, Rat; other species not tested.

IP: 1:200-1:2000

IHC: 1:20-1:200

Antibody description

ERAB Rabbit Polyclonal antibody. Positive WB detected in HeLa cells, A2780 cells, human brain tissue, human liver tissue, mouse liver tissue, Transfected cells, Transfected HEK-293 cells. Positive IP detected in HeLa cells. Positive FC detected in MCF-7 cells. Positive IHC detected in human breast cancer tissue. Observed molecular weight by Western-blot: 27 kDa

Preparation

This antibody was obtained by immunization of ERAB recombinant protein (Accession Number: NM_001037811). Purification method: Antigen affinity purified.

Formulation

PBS with 0.02% sodium azide and 50% glycerol pH 7.3.

Storage

Store at -20°C. DO NOT ALIQUOT

Clonality

Polyclonal

Ig Type

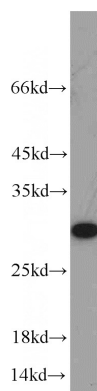
Rabbit IgG

Applications

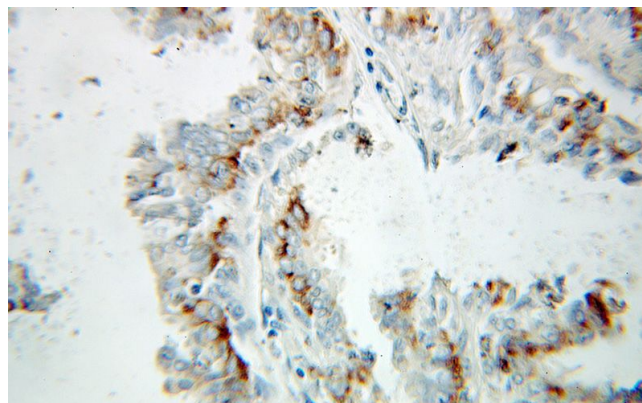
ELISA, WB, IHC, FC, IP

Dilutions

Validations



HeLa cells were subjected to SDS PAGE followed by western blot with Catalog No:110398(HSD17B10 antibody) at dilution of 1:1000

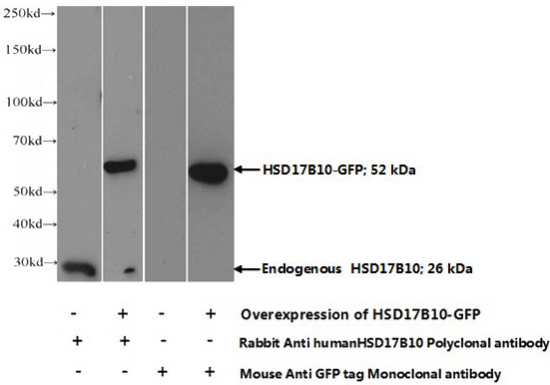


Immunohistochemical of paraffin-embedded human breast cancer using Catalog No:110398(HSD17B10 antibody) at dilution of 1:100 (under 10x lens)

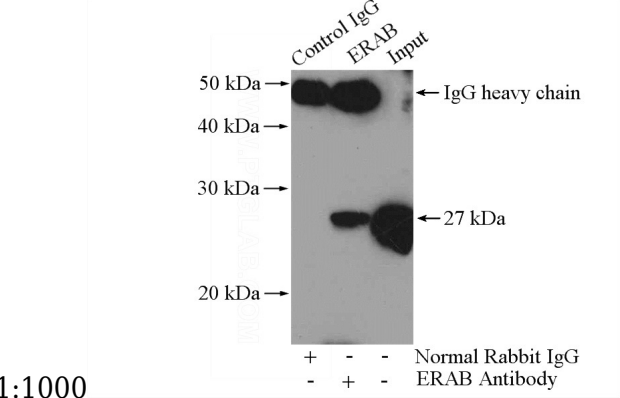
ERAB antibody



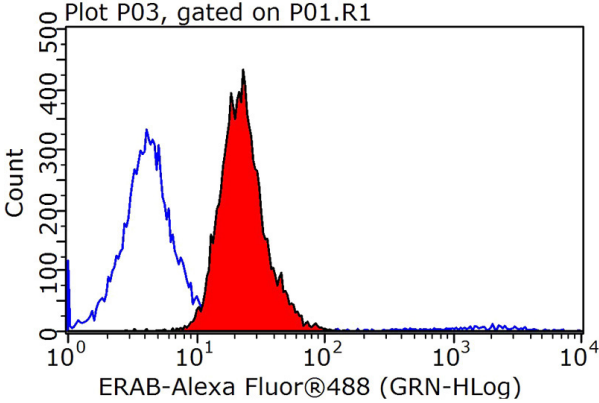
Catalog Number: 110398



Transfected HEK-293 cells were subjected to SDS PAGE followed by western blot with Catalog No:110398(HSD17B10 Antibody) at dilution of



IP Result of anti-HSD17B10 (IP:Catalog No:110398, 4ug; Detection:Catalog No:110398 1:500) with HeLa cells lysate 1200ug.



1X10⁶ MCF-7 cells were stained with 0.2ug HSD17B10 antibody (Catalog No:110398, red) and control antibody (blue). Fixed with 90% MeOH blocked with 3% BSA (30 min). Alexa Fluor 488-conjugated AffiniPure Goat Anti-Rabbit IgG(H+L) with dilution 1:1000.