

EPS8L2 antibody

Catalog Number: 110395

Product name

EPS8L2 antibody

IHC: 1:20-1:200

IF: 1:10-1:100

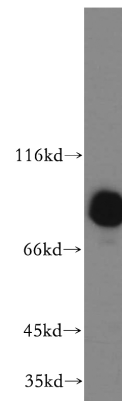
Specificity

Human, Mouse; other species not tested.

Validations

Antibody description

EPS8L2 Rabbit Polyclonal antibody. Positive IF detected in HeLa cells. Positive IHC detected in human placenta tissue. Positive WB detected in HeLa cells, A431 cells, human placenta tissue, Jurkat cells, mouse skin tissue. Observed molecular weight by Western-blot: 81kd



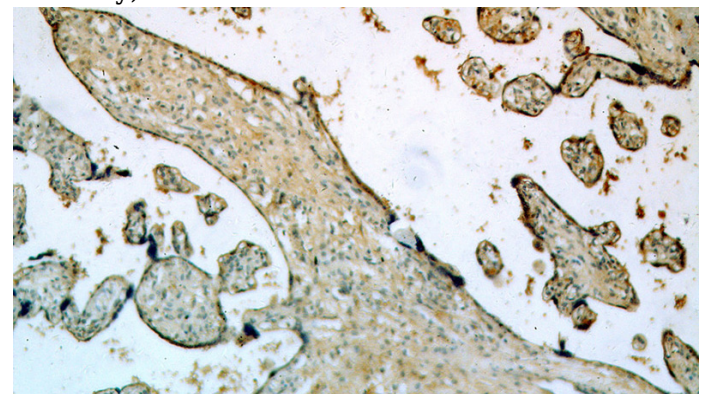
Preparation

This antibody was obtained by immunization of EPS8L2 recombinant protein (Accession Number: BC002474). Purification method: Antigen affinity purified.

HeLa cells were subjected to SDS PAGE followed by western blot with Catalog No:110395(EPS8L2 antibody) at dilution of 1:1500

Formulation

PBS with 0.02% sodium azide and 50% glycerol pH 7.3.



Storage

Store at -20°C. DO NOT ALIQUOT

Clonality

Polyclonal

Immunohistochemical of paraffin-embedded human placenta using Catalog No:110395(EPS8L2 antibody) at dilution of 1:100 (under 10x lens)

Ig Type

Rabbit IgG

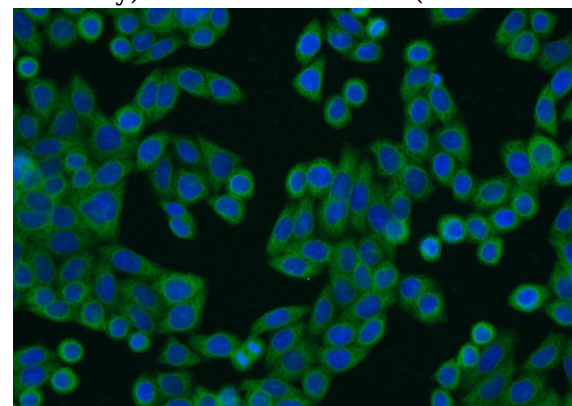
Applications

ELISA, WB, IHC, IF

Dilutions

Recommended Dilution:

WB: 1:500-1:5000



Immunofluorescent analysis of HeLa cells using Catalog No:110395(EPS8L2 Antibody) at dilution

EPS8L2 antibody



Catalog Number: 110395

of 1:25 and Alexa Fluor 488-conjugated AffiniPure Goat Anti-Rabbit IgG(H+L)