

EPS8 antibody

Catalog Number: 110394

Product name

EPS8 antibody

WB: 1:200-1:2000

IP: 1:200-1:2000

Specificity

Human; other species not tested.

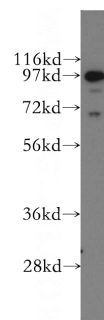
IHC: 1:20-1:200

IF: 1:10-1:100

Antibody description

EPS8 Rabbit Polyclonal antibody. Positive WB detected in human brain tissue, A375 cells, HeLa cells, human heart tissue. Positive IP detected in HeLa cells. Positive IHC detected in human breast cancer tissue. Positive IF detected in A375 cells. Observed molecular weight by Western-blot: 97 kDa

Validations



Preparation

This antibody was obtained by immunization of EPS8 recombinant protein (Accession Number: XM_024448882). Purification method: Antigen affinity purified.

human brain tissue were subjected to SDS PAGE followed by western blot with Catalog No:110394(EPS8 antibody) at dilution of 1:500

Formulation

PBS with 0.1% sodium azide and 50% glycerol pH 7.3.

Storage

Store at -20°C. DO NOT ALIQUOT

Clonality

Polyclonal

Ig Type

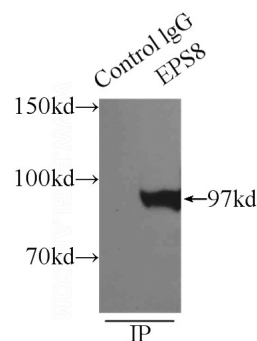
Rabbit IgG

Applications

ELISA, WB, IHC, IP, IF

Dilutions

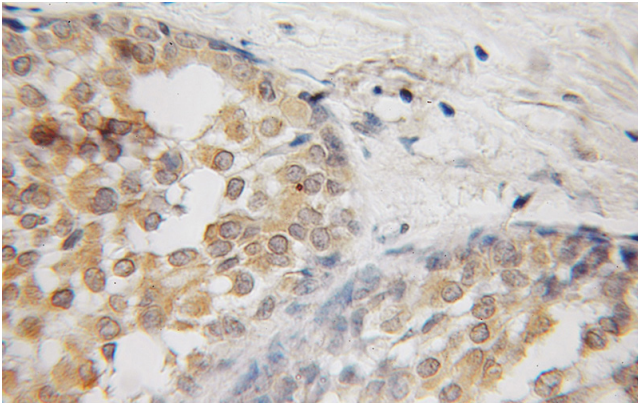
Recommended Dilution:



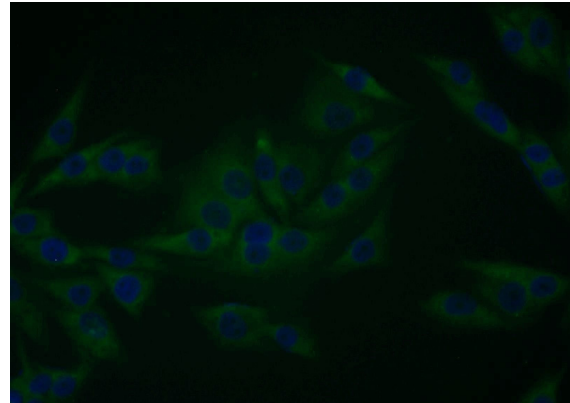
IP Result of anti-EPS8 (IP:Catalog No:110394, 3ug; Detection:Catalog No:110394 1:500) with HeLa cells lysate 3800ug.

EPS8 antibody

Catalog Number: 110394



Immunohistochemical of paraffin-embedded human breast cancer using Catalog No:110394(EPS8 antibody) at dilution of 1:50 (under 10x lens)



Immunofluorescent analysis of A375 cells using Catalog No:110394(EPS8 Antibody) at dilution of 1:25 and Alexa Fluor 488-conjugated AffiniPure Goat Anti-Rabbit IgG(H+L)