

EPS15R antibody



Catalog Number: 110393

Product name

EPS15R antibody

Polyclonal

Ig Type

Specificity

Human, Mouse, Rat; other species not tested.

Rabbit IgG

Applications

Antibody description

EPS15R Rabbit Polyclonal antibody. Positive WB detected in BxPC-3 cells, HEK-293 cells, MCF7 cells. Observed molecular weight by Western-blot: 94 kDa

ELISA, WB

Dilutions

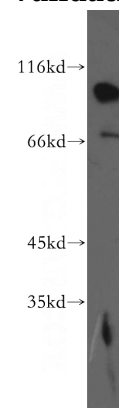
Recommended Dilution:

WB: 1:500-1:5000

Preparation

This antibody was obtained by immunization of EPS15R recombinant protein (Accession Number: NM_001258376). Purification method: Antigen affinity purified.

Validations



Formulation

PBS with 0.02% sodium azide and 50% glycerol pH 7.3.

Storage

Store at -20°C. DO NOT ALIQUOT

BxPC-3 cells were subjected to SDS PAGE followed by western blot with Catalog No:110393(EPS15L1 antibody) at dilution of 1:500

Clonality