

EPHX2 antibody

Catalog Number: 110387

Product name

EPHX2 antibody

IP: 1:200-1:2000

IHC: 1:20-1:200

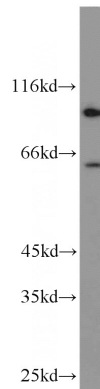
Specificity

Human; other species not tested.

Validations

Antibody description

EPHX2 Rabbit Polyclonal antibody. Positive IP detected in HEK-293 cells. Positive WB detected in HeLa cells, HEK-293 cells. Positive IHC detected in human colon cancer tissue. Observed molecular weight by Western-blot: 63 kDa



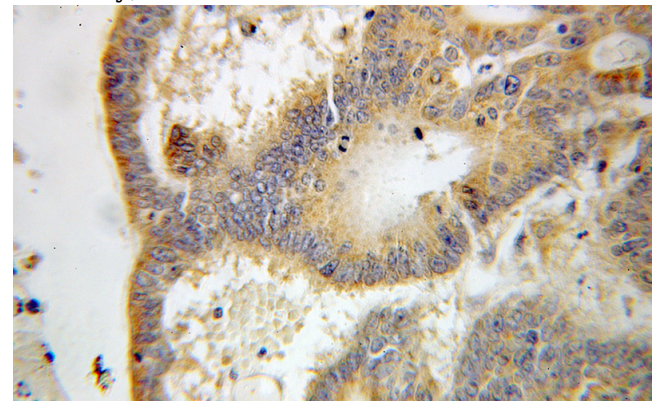
Preparation

This antibody was obtained by immunization of EPHX2 recombinant protein (Accession Number: NM_001979). Purification method: Antigen affinity purified.

HeLa cells were subjected to SDS PAGE followed by western blot with Catalog No:110387(EPHX2 antibody) at dilution of 1:1000

Formulation

PBS with 0.1% sodium azide and 50% glycerol pH 7.3.



Storage

Store at -20°C. DO NOT ALIQUOT

Clonality

Polyclonal

Immunohistochemical of paraffin-embedded human colon cancer using Catalog No:110387(EPHX2 antibody) at dilution of 1:100 (under 10x lens)

Ig Type

Rabbit IgG

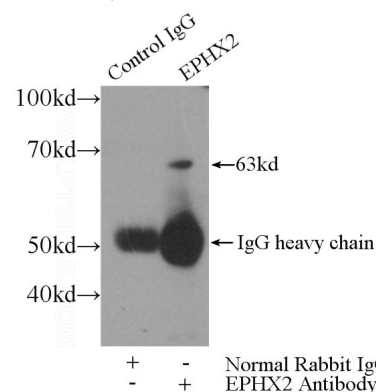
Applications

ELISA, WB, IHC, IP

Dilutions

Recommended Dilution:

WB: 1:500-1:5000



IP Result of anti-EPHX2 (IP:Catalog No:110387,

EPHX2 antibody



Catalog Number: 110387

4ug; Detection:Catalog No:110387 1:500) with HEK-293 cells lysate 2800ug.