

# EPHA8 antibody



Catalog Number: 110382

## Product name

EPHA8 antibody

## Specificity

Human, Mouse, Rat; other species not tested.

## Antibody description

EPHA8 Rabbit Polyclonal antibody. Positive WB detected in mouse brain tissue. Positive FC detected in SH-SY5Y cells. Observed molecular weight by Western-blot: 120 kDa

## Preparation

This antibody was obtained by immunization of EPHA8 recombinant protein (Accession Number: NM\_001006943). Purification method: Antigen affinity purified.

## Formulation

PBS with 0.02% sodium azide and 50% glycerol pH 7.3.

## Storage

Store at -20°C. DO NOT ALIQUOT

## Clonality

Polyclonal

## Ig Type

Rabbit IgG

## Applications

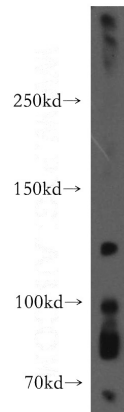
ELISA, WB, FC

## Dilutions

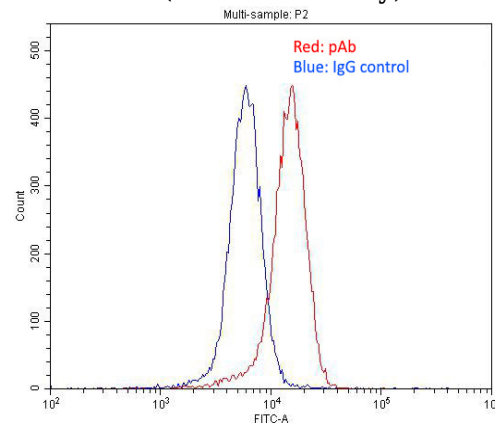
Recommended Dilution:

WB: 1:200-1:2000

## Validations



mouse brain tissue were subjected to SDS PAGE followed by western blot with Catalog No:110382(EPHA8 antibody) at dilution of 1:300



1X10<sup>6</sup> SH-SY5Y cells were stained with 0.2ug EPHA8 antibody (Catalog No:110382, red) and control antibody (blue). Fixed with 4% PFA blocked with 3% BSA (30 min). Alexa Fluor 488-conjugated AffiniPure Goat Anti-Rabbit IgG(H+L) with dilution 1:1500.