

# ESF1 antibody

Catalog Number: 110380

## Product name

ESF1 antibody

## Specificity

Human, Mouse; other species not tested.

## Antibody description

ESF1 Rabbit Polyclonal antibody. Positive IF detected in MCF-7 cells. Positive WB detected in mouse heart tissue. Observed molecular weight by Western-blot: 100-110 kDa

## Preparation

This antibody was obtained by immunization of ESF1 recombinant protein (Accession Number: NM\_001276380). Purification method: Antigen Affinity purified.

## Formulation

PBS with 0.02% sodium azide and 50% glycerol pH 7.3.

## Storage

Store at -20°C. DO NOT ALIQUOT

## Clonality

Polyclonal

## Ig Type

Rabbit IgG

## Applications

ELISA, WB, IF

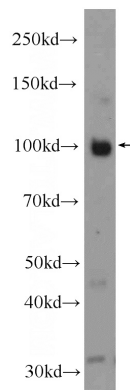
## Dilutions

Recommended Dilution:

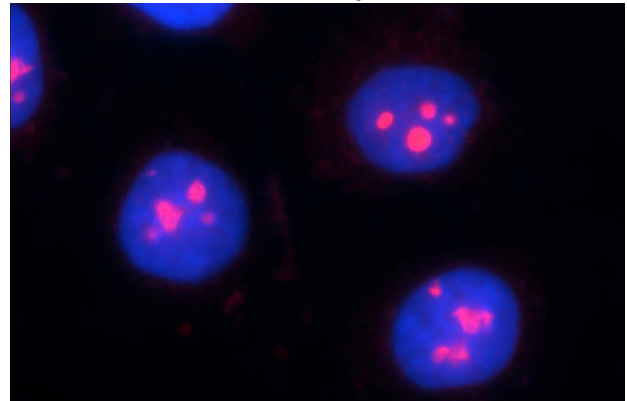
WB: 1:1000-1:10000

IF: 1:20-1:200

## Validations



mouse heart tissue were subjected to SDS PAGE followed by western blot with Catalog No:110380(ESF1 Antibody) at dilution of 1:2000



Immunofluorescent analysis of MCF-7 cells using Catalog No:110380(ESF1 Antibody) at dilution of 1:50 and Rhodamine-Goat anti-Rabbit IgG