

# ERp72 antibody



Catalog Number: 110375

## Product name

ERp72 antibody

WB: 1:500-1:5000

IP: 1:200-1:2000

## Specificity

Human, Mouse, Rat; other species not tested.

IHC: 1:20-1:200

IF: 1:20-1:200

## Antibody description

ERp72 Rabbit Polyclonal antibody. Positive IF detected in PC-3 cells. Positive IHC detected in human lung cancer tissue, human prostate cancer tissue. Positive WB detected in HepG2 cells, HeLa cells, L02 cells, mouse brain tissue. Positive IP detected in HeLa cells. Observed molecular weight by Western-blot: 72 kDa

## Preparation

This antibody was obtained by immunization of ERp72 recombinant protein (Accession Number: NM\_004911). Purification method: Antigen affinity purified.

## Formulation

PBS with 0.02% sodium azide and 50% glycerol pH 7.3.

## Storage

Store at -20°C. DO NOT ALIQUOT

## Clonality

Polyclonal

## Ig Type

Rabbit IgG

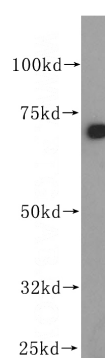
## Applications

ELISA, WB, IHC, IF, IP

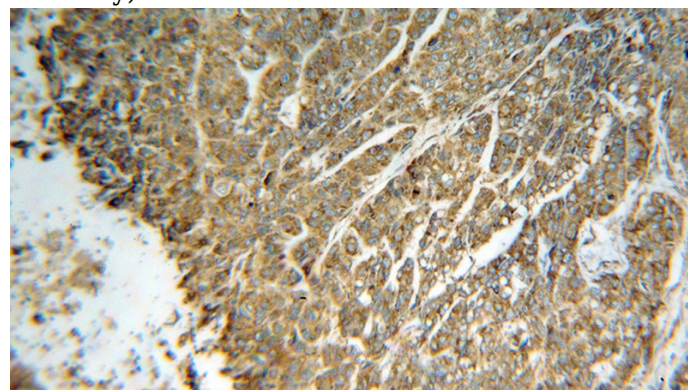
## Dilutions

Recommended Dilution:

## Validations



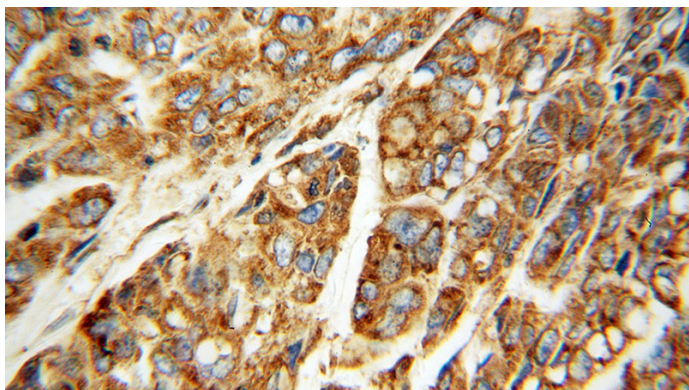
HepG2 cells were subjected to SDS PAGE followed by western blot with Catalog No:110375(PDIA4 antibody) at dilution of 1:500



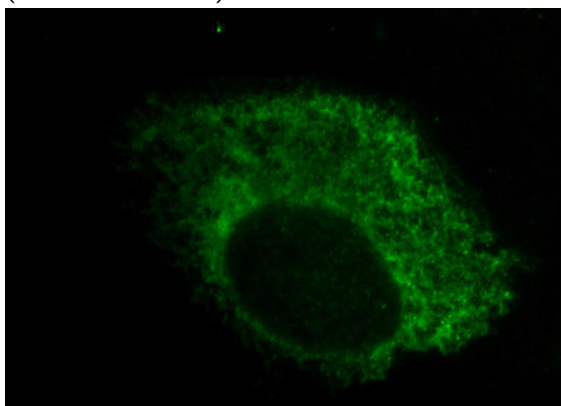
Immunohistochemical of paraffin-embedded human lung cancer using Catalog No:110375(PDIA4 antibody) at dilution of 1:100 (under 10x lens)

# ERp72 antibody

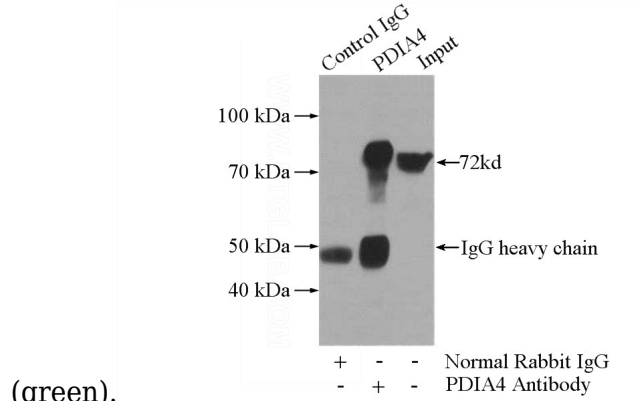
Catalog Number: 110375



Immunohistochemical of paraffin-embedded human lung cancer using Catalog No:110375(PDIA4 antibody) at dilution of 1:100 (under 40x lens)



Immunofluorescent analysis of PC-3 cells, using PDIA4 antibody Catalog No:110375 at 1:50 dilution and FITC-labeled donkey anti-rabbit IgG



(green).

IP Result of anti-ERp72 (IP:Catalog No:110375, 4ug; Detection:Catalog No:110375 1:500) with HeLa cells lysate 2800ug.