

ERP29 antibody



Catalog Number: 110373

Product name

ERP29 antibody

Specificity

Human, Mouse, Rat; other species not tested.

Antibody description

ERP29 Rabbit Polyclonal antibody. Positive IF detected in HeLa cells. Positive IHC detected in human liver tissue, human pancreas tissue. Positive WB detected in mouse liver tissue, HEK-293 cells, mouse kidney tissue, mouse lung tissue. Positive IP detected in mouse liver tissue. Observed molecular weight by Western-blot: 29 kDa

Preparation

This antibody was obtained by immunization of ERP29 recombinant protein (Accession Number: NM_006817). Purification method: Antigen affinity purified.

Formulation

PBS with 0.1% sodium azide and 50% glycerol pH 7.3.

Storage

Store at -20°C. DO NOT ALIQUOT

Clonality

Polyclonal

Ig Type

Rabbit IgG

Applications

ELISA, WB, IHC, IF, IP

Dilutions

Recommended Dilution:

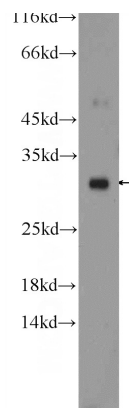
WB: 1:500-1:5000

IP: 1:500-1:5000

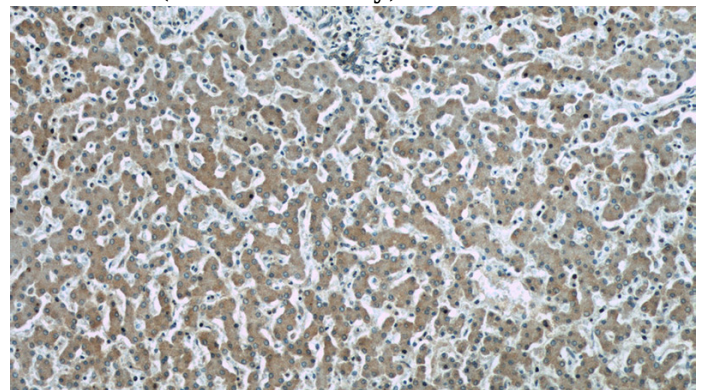
IHC: 1:20-1:200

IF: 1:10-1:100

Validations



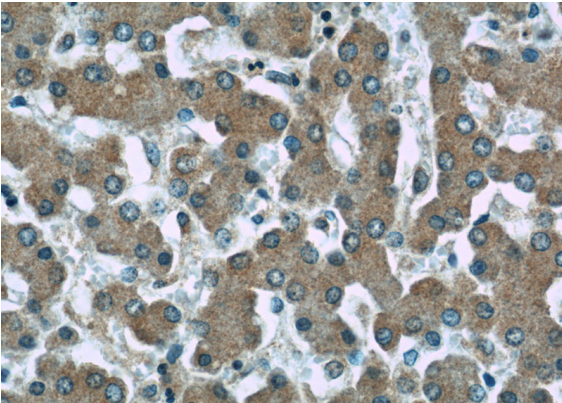
mouse liver tissue were subjected to SDS PAGE followed by western blot with Catalog No:110373(ERP29 Antibody) at dilution of 1:1000



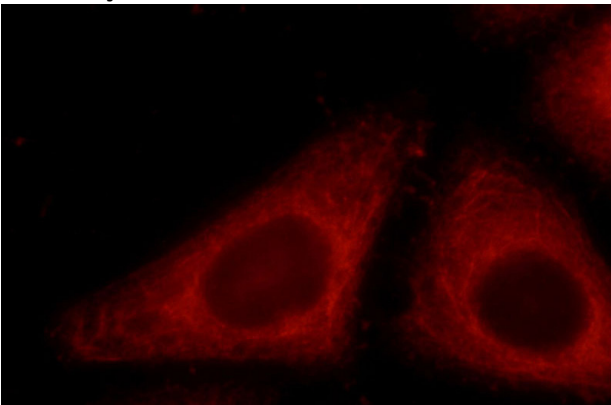
Immunohistochemistry of paraffin-embedded human liver slide using Catalog No:110373(ERP29 Antibody) at dilution of 1:50

ERP29 antibody

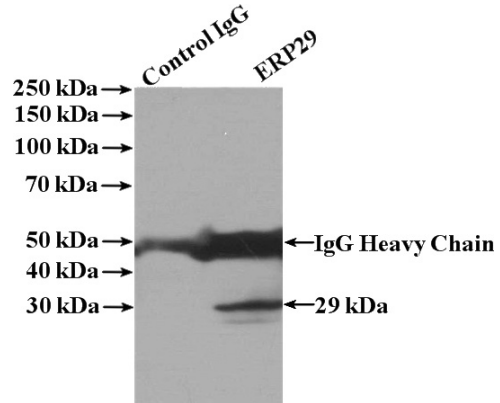
Catalog Number: 110373



Immunohistochemistry of paraffin-embedded human liver slide using Catalog No:110373(ERP29 Antibody) at dilution of 1:50



Immunofluorescent analysis of HeLa cells using Catalog No:110373(ERP29 Antibody) at dilution of 1:25 and Rhodamine-Goat anti-Rabbit IgG



IP Result of anti-ERP29 (IP:Catalog No:110373, 4ug; Detection:Catalog No:110373 1:1000) with mouse liver tissue lysate 4000ug.