

ERO1L antibody



Catalog Number: 110368

Product name

ERO1L antibody

Specificity

Human, Mouse; other species not tested.

Antibody description

ERO1L Rabbit Polyclonal antibody. Positive IHC detected in human pancreas tissue.

Preparation

This antibody was obtained by immunization of Peptide (Accession Number: NM_014584).
Purification method: Antigen affinity purified.

Formulation

PBS with 0.02% sodium azide and 50% glycerol pH 7.3.

Storage

Store at -20°C. DO NOT ALIQUOT

Clonality

Polyclonal

Ig Type

Rabbit IgG

Applications

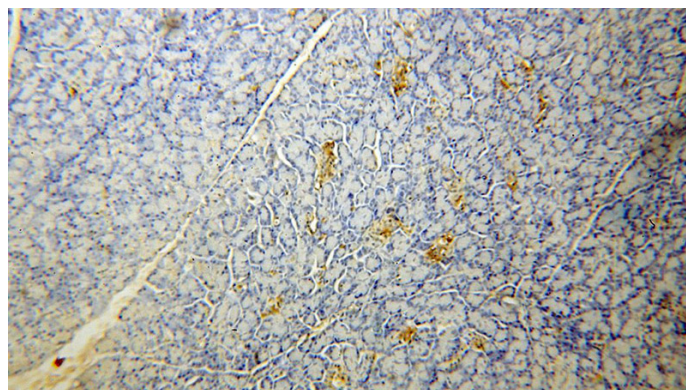
ELISA, IHC

Dilutions

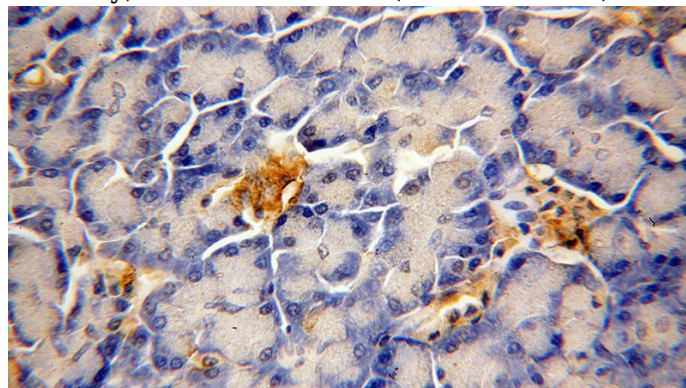
Recommended Dilution:

IHC: 1:20-1:200

Validations



Immunohistochemical of paraffin-embedded human pancreas using Catalog No:110368(ERO1L antibody) at dilution of 1:50 (under 10x lens)



Immunohistochemical of paraffin-embedded human pancreas using Catalog No:110368(ERO1L antibody) at dilution of 1:50 (under 40x lens)