

# ERMAP antibody



Catalog Number: 110366

## Product name

ERMAP antibody

IP: 1:200-1:1000

IF: 1:50-1:500

## Specificity

Human; other species not tested.

## Antibody description

ERMAP Rabbit Polyclonal antibody. Positive IP detected in MCF-7 cells. Positive WB detected in MCF-7 cells. Positive IF detected in MCF-7 cells. Observed molecular weight by Western-blot: 53 kDa

## Preparation

This antibody was obtained by immunization of ERMAP recombinant protein (Accession Number: NM\_018538). Purification method: Antigen affinity purified.

## Formulation

PBS with 0.1% sodium azide and 50% glycerol pH 7.3.

## Storage

Store at -20°C. DO NOT ALIQUOT

## Clonality

Polyclonal

## Ig Type

Rabbit IgG

## Applications

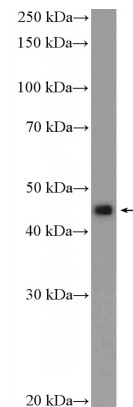
ELISA, WB, IP, IF

## Dilutions

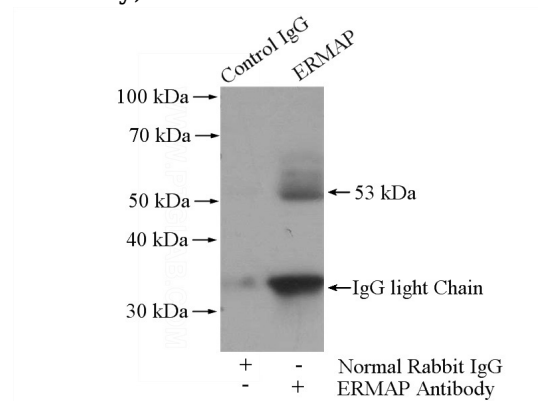
Recommended Dilution:

WB: 1:200-1:1000

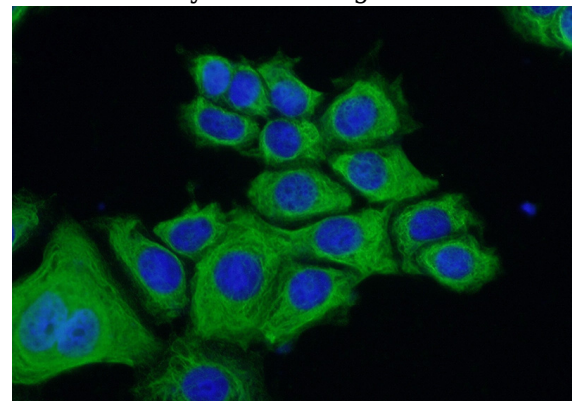
## Validations



MCF-7 cells were subjected to SDS PAGE followed by western blot with Catalog No:110366(ERMAP Antibody) at dilution of 1:300



IP Result of anti-ERMAP (IP:Catalog No:110366, 4ug; Detection:Catalog No:110366 1:300) with MCF-7 cells lysate 1600ug.



Immunofluorescent analysis of (-20oc Ethanol) fixed MCF-7 cells using Catalog

# ERMAP antibody



Catalog Number: 110366

---

No:110366(ERMAP Antibody) at dilution of 1:50

and Alexa Fluor 488-conjugated AffiniPure Goat  
Anti-Rabbit IgG(H+L)