

ERLIN1 antibody



Catalog Number: 110364

Product name

ERLIN1 antibody

Specificity

Human, Mouse, Rat; other species not tested.

Antibody description

ERLIN1 Rabbit Polyclonal antibody. Positive IHC detected in human testis tissue, human placenta tissue. Positive IF detected in HeLa cells. Positive WB detected in rat pancreas tissue, COLO 320 cells, human brain tissue, human kidney tissue, human ovary cancer, mouse liver tissue. Positive IP detected in mouse heart tissue. Observed molecular weight by Western-blot: 39 kDa

Preparation

This antibody was obtained by immunization of ERLIN1 recombinant protein (Accession Number: NM_001100626). Purification method: Antigen affinity purified.

Formulation

PBS with 0.02% sodium azide and 50% glycerol pH 7.3.

Storage

Store at -20°C. DO NOT ALIQUOT

Clonality

Polyclonal

Ig Type

Rabbit IgG

Applications

ELISA, WB, IHC, IP, IF

Dilutions

Recommended Dilution:

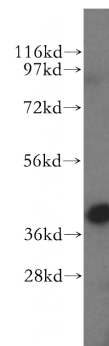
WB: 1:500-1:5000

IP: 1:500-1:5000

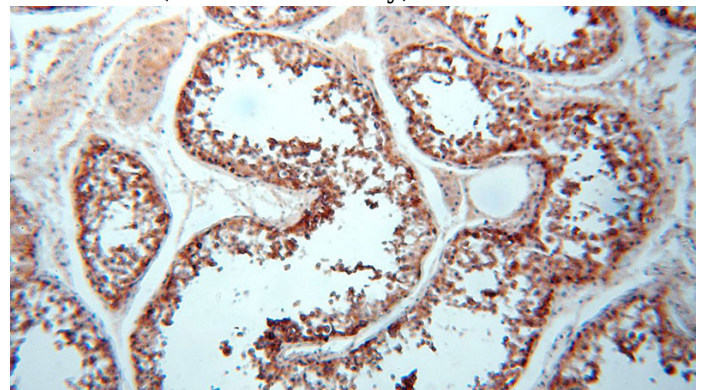
IHC: 1:20-1:200

IF: 1:20-1:200

Validations



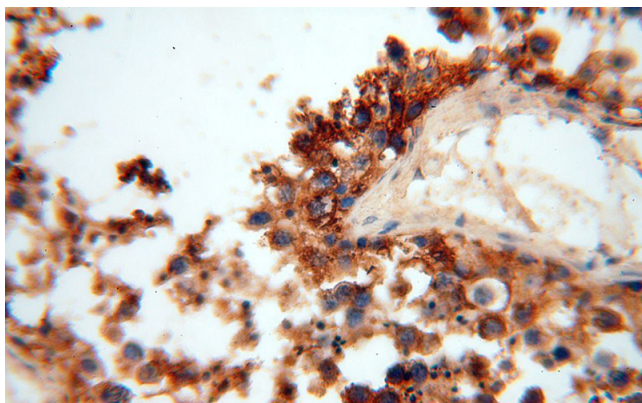
rat pancreas tissue were subjected to SDS PAGE followed by western blot with Catalog No:110364(ERLIN1 antibody) at dilution of 1:500



Immunohistochemical of paraffin-embedded human testis using Catalog No:110364(ERLIN1 antibody) at dilution of 1:100 (under 10x lens)

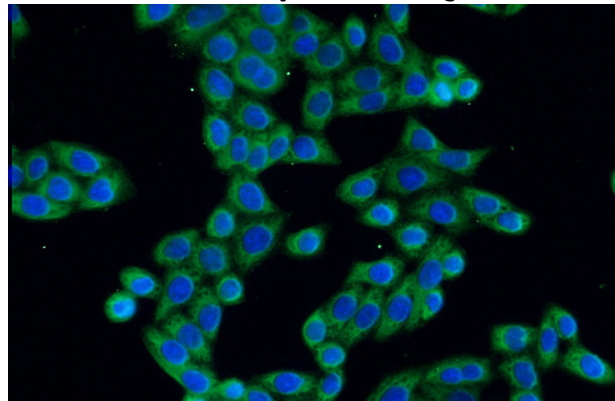
ERLIN1 antibody

Catalog Number: 110364



Immunohistochemical of paraffin-embedded human testis using Catalog No:110364(ERLIN1 antibody) at dilution of 1:100 (under 40x lens)

IP Result of anti-ERLIN1 (IP:Catalog No:110364, 3ug; Detection:Catalog No:110364 1:1000) with mouse heart tissue lysate 4000ug.



Immunofluorescent analysis of HeLa cells using Catalog No:110364(ERLIN1 Antibody) at dilution of 1:50 and Alexa Fluor 488-conjugated AffiniPure Goat Anti-Rabbit IgG(H+L)

