

ERK1/2 antibody

Catalog Number: 110362

Product name

ERK1/2 antibody

WB: 1:1000-1:10000

IHC: 1:20-1:200

Specificity

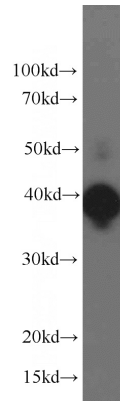
Human, Mouse, Rat; other species not tested.

IF: 1:10-1:100

Antibody description

ERK1/2 Rabbit Polyclonal antibody. Positive IHC detected in human cervical cancer tissue. Positive IF detected in HepG2 cells, HeLa cells. Positive WB detected in HeLa cells, A431 cells, HEK-293 cells, HepG2 cells, HepG2/A431 cells, mouse brain tissue, mouse skin tissue, NIH/3T3 cells, rat skeletal muscle tissue, rat skin tissue. Observed molecular weight by Western-blot: 38-44 kDa

Validations



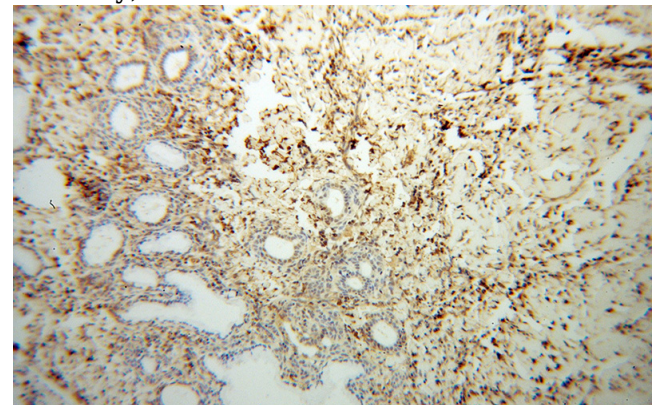
Preparation

This antibody was obtained by immunization of Peptide (Accession Number: NM_002745). Purification method: Antigen affinity purified.

HeLa cells were subjected to SDS PAGE followed by western blot with Catalog No:110362(ERK1/2 antibody) at dilution of 1:3000

Formulation

PBS with 0.02% sodium azide and 50% glycerol pH 7.3.



Storage

Store at -20°C. DO NOT ALIQUOT

Clonality

Polyclonal

Immunohistochemical of paraffin-embedded human cervical cancer using Catalog No:110362(ERK1/2 antibody) at dilution of 1:100 (under 10x lens)

Ig Type

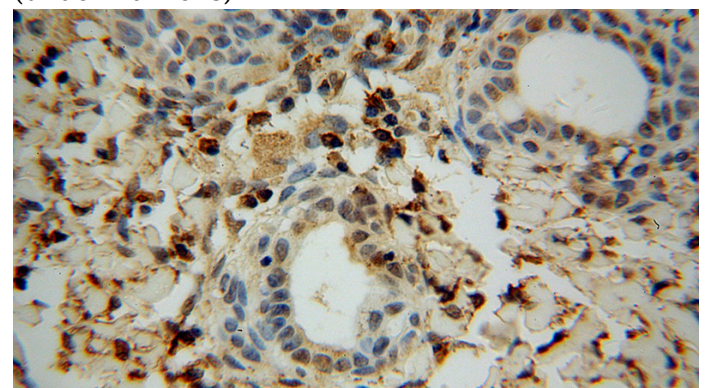
Rabbit IgG

Applications

ELISA, WB, IHC, IF

Dilutions

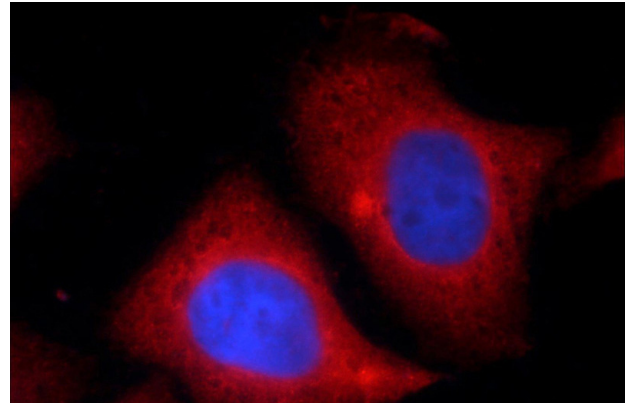
Recommended Dilution:



ERK1/2 antibody

Catalog Number: 110362

Immunohistochemical of paraffin-embedded human cervical cancer using Catalog No:110362(ERK1/2 antibody) at dilution of 1:100 (under 40x lens)



Immunofluorescent analysis of HepG2 cells using Catalog No:110362(ERK1/2 Antibody) at dilution of 1:25 and Rhodamine-Goat anti-Rabbit IgG