

ERI1 antibody

Catalog Number: 110360

Product name

ERI1 antibody

IHC: 1:20-1:200

IF: 1:10-1:100

Specificity

Human, Mouse, Rat; other species not tested.

Antibody description

ERI1 Rabbit Polyclonal antibody. Positive IHC detected in human testis tissue, human liver cancer tissue. Positive IF detected in HepG2 cells. Positive WB detected in K-562 cells, HepG2 cells, HL-60 cells. Observed molecular weight by Western-blot: 46kd

Preparation

This antibody was obtained by immunization of ERI1 recombinant protein (Accession Number: NM_153332). Purification method: Antigen affinity purified.

Formulation

PBS with 0.02% sodium azide and 50% glycerol pH 7.3.

Storage

Store at -20°C. DO NOT ALIQUOT

Clonality

Polyclonal

Ig Type

Rabbit IgG

Applications

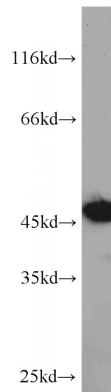
ELISA, WB, IHC, IF

Dilutions

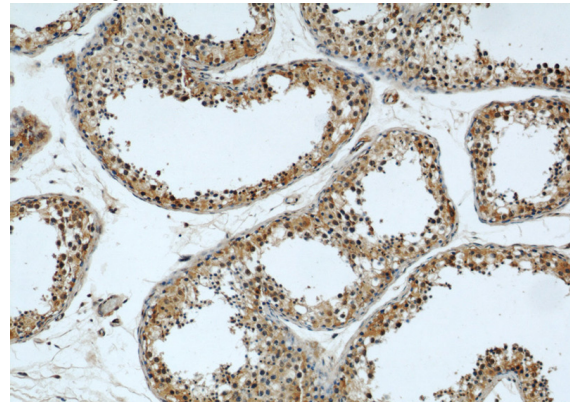
Recommended Dilution:

WB: 1:500-1:5000

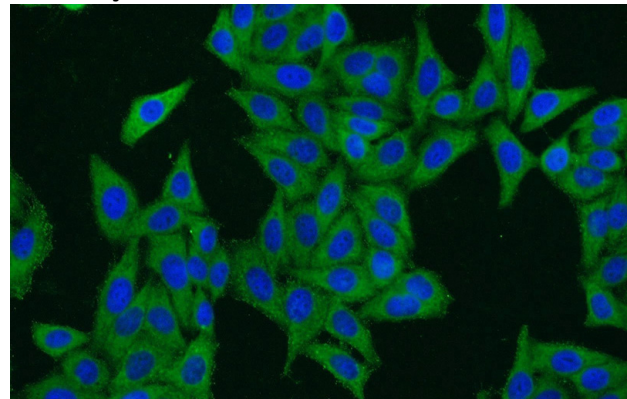
Validations



K-562 cells were subjected to SDS PAGE followed by western blot with Catalog No:110360(ERI1 antibody) at dilution of 1:1000



Immunohistochemical of paraffin-embedded human testis using Catalog No:110360(ERI1 antibody) at dilution of 1:50 (under 10x lens)



Immunofluorescent analysis of HepG2 cells using Catalog No:110360(ERI1 Antibody) at dilution of

ERI1 antibody



Catalog Number: 110360

1:25 and Alexa Fluor 488-conjugated AffiniPure

Goat Anti-Rabbit IgG(H+L)