

Product name

EPCR antibody

Specificity

Human; other species not tested.

Antibody description

EPCR Rabbit Polyclonal antibody. Positive WB detected in human spleen tissue. Positive IHC detected in human pancreas cancer tissue, human lung cancer tissue. Observed molecular weight by Western-blot: 49 kDa

Preparation

This antibody was obtained by immunization of EPCR recombinant protein (Accession Number: NM_006404). Purification method: Antigen affinity purified.

Formulation

PBS with 0.1% sodium azide and 50% glycerol pH 7.3.

Storage

Store at -20°C. DO NOT ALIQUOT

Clonality

Polyclonal

Ig Type

Rabbit IgG

Applications

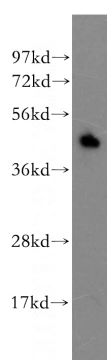
ELISA, WB, IHC

Dilutions

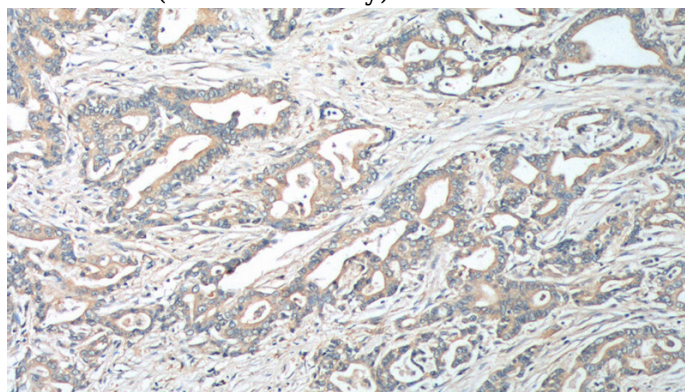
Recommended Dilution:

WB: 1:200-1:2000

IHC: 1:50-1:500

Validations

human spleen tissue were subjected to SDS PAGE followed by western blot with Catalog No:110347(PRocR antibody) at dilution of 1:400



Immunohistochemistry of paraffin-embedded human pancreas cancer tissue slide using Catalog No:110347(PRocR Antibody) at dilution of 1:100 (under 10x lens).