

ENTPD7 antibody



Catalog Number: 110335

Product name

ENTPD7 antibody

Specificity

Human; other species not tested.

Antibody description

ENTPD7 Rabbit Polyclonal antibody. Positive IF detected in HeLa cells. Positive WB detected in HeLa cells. Observed molecular weight by Western-blot: 69 kDa

Preparation

This antibody was obtained by immunization of ENTPD7 recombinant protein (Accession Number: NM_001349963). Purification method: Antigen affinity purified.

Formulation

PBS with 0.1% sodium azide and 50% glycerol pH 7.3.

Storage

Store at -20°C. DO NOT ALIQUOT

Clonality

Polyclonal

Ig Type

Rabbit IgG

Applications

ELISA, WB, IF

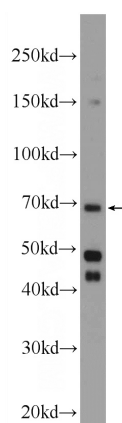
Dilutions

Recommended Dilution:

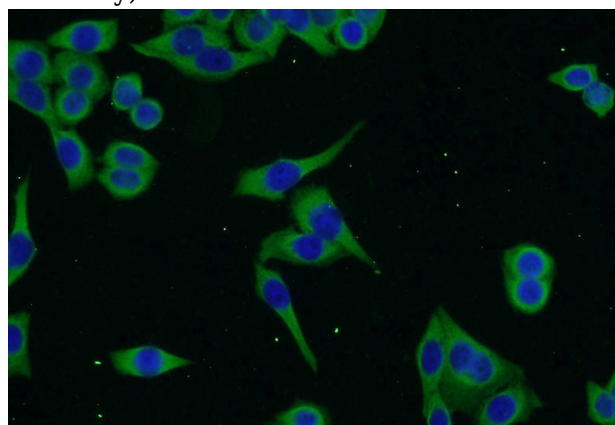
WB: 1:200-1:1000

IF: 1:20-1:200

Validations



HeLa cells were subjected to SDS PAGE followed by western blot with Catalog No:110335(ENTPD7 Antibody) at dilution of 1:300



Immunofluorescent analysis of HeLa cells using Catalog No:110335(ENTPD7 Antibody) at dilution of 1:50 and Alexa Fluor 488-conjugated AffiniPure Goat Anti-Rabbit IgG(H+L)