

# ENTPD6 antibody

Catalog Number: 110334

## Product name

ENTPD6 antibody

## Specificity

Human, Mouse, Rat; other species not tested.

## Antibody description

ENTPD6 Rabbit Polyclonal antibody. Positive IHC detected in human prostate cancer tissue. Positive WB detected in mouse spleen tissue. Observed molecular weight by Western-blot: 60 kDa

## Preparation

This antibody was obtained by immunization of ENTPD6 recombinant protein (Accession Number: XM\_011529397). Purification method: Antigen affinity purified.

## Formulation

PBS with 0.1% sodium azide and 50% glycerol pH 7.3.

## Storage

Store at -20°C. DO NOT ALIQUOT

## Clonality

Polyclonal

## Ig Type

Rabbit IgG

## Applications

ELISA, IHC, WB

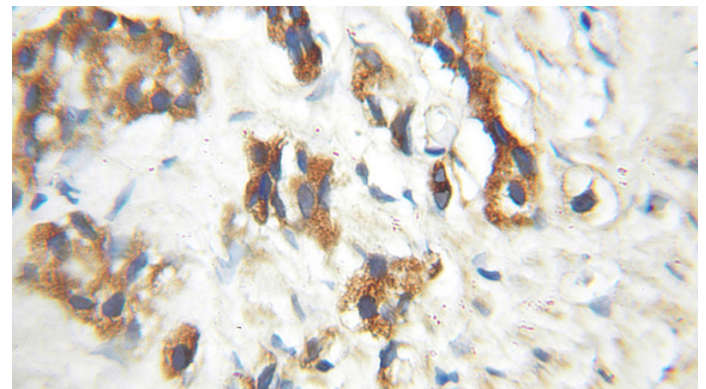
## Dilutions

Recommended Dilution:

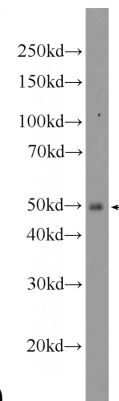
WB: 1:200-1:2000

IHC: 1:20-1:200

## Validations



Immunohistochemical of paraffin-embedded human prostate cancer using Catalog No:110334(ENTPD6 antibody) at dilution of 1:100



(under 10x lens)

mouse spleen tissue were subjected to SDS PAGE followed by western blot with Catalog No:110334(ENTPD6 Antibody) at dilution of 1:600