

EEF1E1 antibody



Catalog Number: 110315

Product name

EEF1E1 antibody

Specificity

Human, Mouse, Rat; other species not tested.

Antibody description

EEF1E1 Rabbit Polyclonal antibody. Positive IHC detected in human breast cancer tissue. Positive WB detected in HepG2 cells, HEK-293 cells, human testis tissue, Jurkat cells, SKOV-3 cells. Observed molecular weight by Western-blot: 20kd

Preparation

This antibody was obtained by immunization of EEF1E1 recombinant protein (Accession Number: NM_004280). Purification method: Antigen affinity purified.

Formulation

PBS with 0.1% sodium azide and 50% glycerol pH 7.3.

Storage

Store at -20°C. DO NOT ALIQUOT

Clonality

Polyclonal

Ig Type

Rabbit IgG

Applications

ELISA, IHC, WB

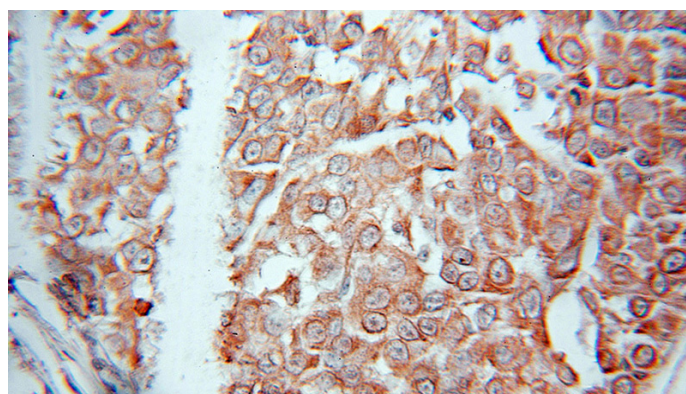
Dilutions

Recommended Dilution:

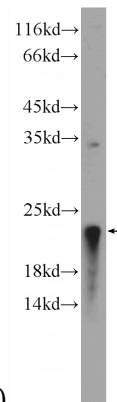
WB: 1:500-1:5000

IHC: 1:20-1:200

Validations



Immunohistochemical of paraffin-embedded human breast cancer using Catalog No:110315(EEF1E1 antibody) at dilution of 1:10



(under 10x lens)

HepG2 cells were subjected to SDS PAGE followed by western blot with Catalog No:110315(EEF1E1 Antibody) at dilution of 1:1000