

EEF1A1 antibody

Catalog Number: 110310

Product name

EEF1A1 antibody

Specificity

Human, Mouse, Rat; other species not tested.

Antibody description

EEF1A1 Rabbit Polyclonal antibody. Positive IF detected in Hela cells. Positive IHC detected in human pancreas cancer tissue. Positive WB detected in HepG2 cells, A431 cells, HEK-293 cells, HeLa cells, human brain tissue, Jurkat cells, MCF7 cells, mouse brain tissue, mouse heart tissue, mouse liver tissue, mouse ovary tissue, mouse pancreas tissue, mouse skeletal muscle tissue, multi-cells, rat brain tissue, SH-SY5Y cells. Observed molecular weight by Western-blot: 50 kDa

Preparation

This antibody was obtained by immunization of EEF1A1 recombinant protein (Accession Number: NM_001402). Purification method: Antigen affinity purified.

Formulation

PBS with 0.1% sodium azide and 50% glycerol pH 7.3.

Storage

Store at -20°C. DO NOT ALIQUOT

Clonality

Polyclonal

Ig Type

Rabbit IgG

Applications

ELISA, WB, IHC, IF

Dilutions

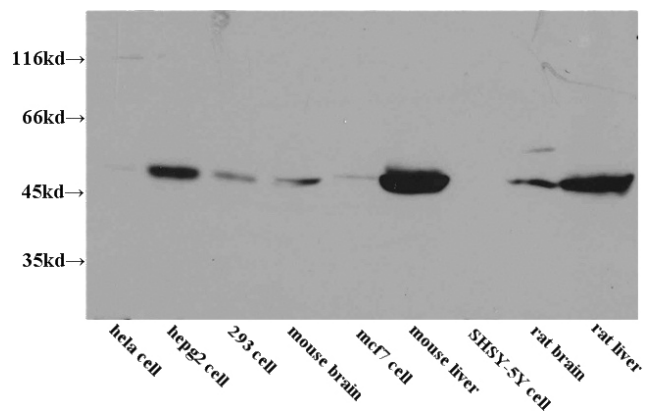
Recommended Dilution:

WB: 1:500-1:5000

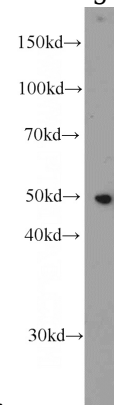
IHC: 1:20-1:200

IF: 1:10-1:100

Validations



WB results of Catalog No:110310(anti-EEF1A1) in

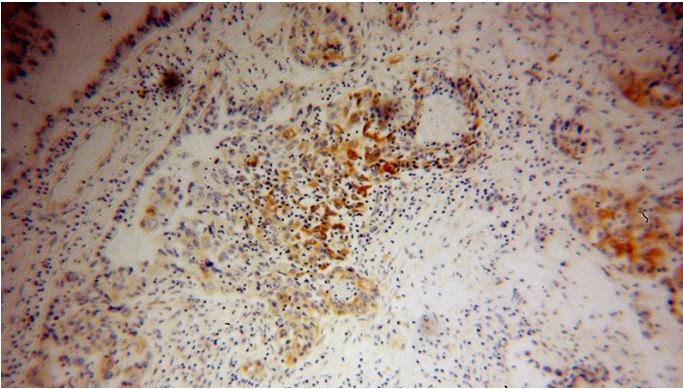


multiple cells.

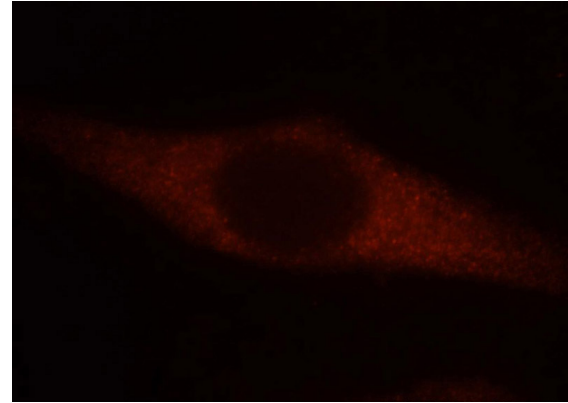
HepG2 cells were subjected to SDS PAGE followed by western blot with Catalog No:110310(EEF1A1 antibody) at dilution of 1:1000

EEF1A1 antibody

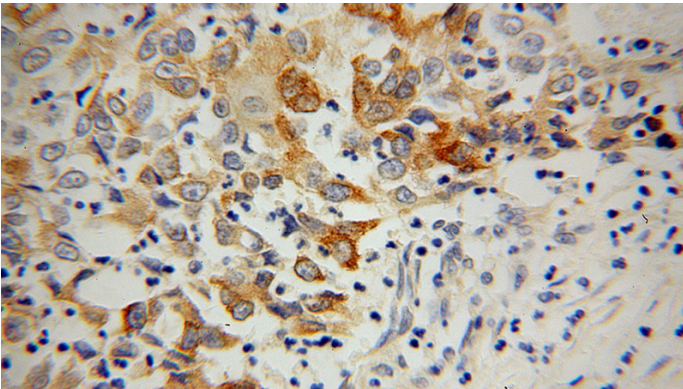
Catalog Number: 110310



Immunohistochemical of paraffin-embedded human pancreas cancer using Catalog No:110310(EEF1A1 antibody) at dilution of 1:100 (under 40x lens)



Immunohistochemical of paraffin-embedded human pancreas cancer using Catalog No:110310(EEF1A1 antibody) at dilution of 1:100 (under 10x lens)



Immunofluorescent analysis of HeLa cells, using EEF1A1 antibody Catalog No:110310 at 1:25 dilution and Rhodamine-labeled goat anti-rabbit IgG (red).