

# EED antibody

Catalog Number: 110309

## Product name

EED antibody

## Specificity

Human, Mouse, Rat; other species not tested.

## Antibody description

EED Rabbit Polyclonal antibody. Positive IP detected in PC-3 cells. Positive WB detected in COLO 320 cells, HeLa cells, K-562 cells, PC-3 cells. Observed molecular weight by Western-blot: 50-68 kDa

## Preparation

This antibody was obtained by immunization of EED recombinant protein (Accession Number: NM\_001308007). Purification method: Antigen affinity purified.

## Formulation

PBS with 0.02% sodium azide and 50% glycerol pH 7.3.

## Storage

Store at -20°C. DO NOT ALIQUOT

## Clonality

Polyclonal

## Ig Type

Rabbit IgG

## Applications

ELISA, WB, IP

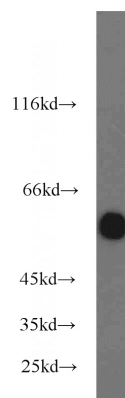
## Dilutions

Recommended Dilution:

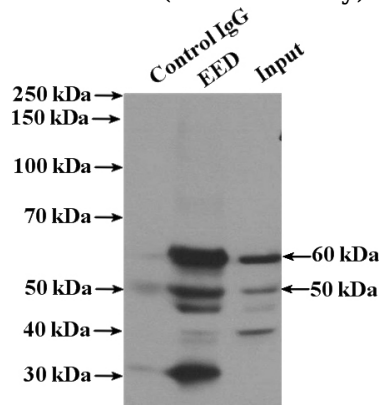
WB: 1:500-1:5000

IP: 1:200-1:2000

## Validations



COLO 320 cells were subjected to SDS PAGE followed by western blot with Catalog No:110309(EED antibody) at dilution of 1:1000



IP Result of anti-EED (IP:Catalog No:110309, 4ug; Detection:Catalog No:110309 1:500) with PC-3 cells lysate 3200ug.