

# EDG7-Specific antibody



Catalog Number: 110304

## Product name

EDG7-Specific antibody

## Specificity

Human, Mouse, Rat; other species not tested.

## Antibody description

EDG7-Specific Rabbit Polyclonal antibody. Positive WB detected in PC-3 cells, human testis tissue, mouse pancreas tissue. Positive IHC detected in human heart tissue. Positive FC detected in PC-3 cells. Observed molecular weight by Western-blot: 40-50 kDa

## Preparation

This antibody was obtained by immunization of Peptide (Accession Number: NM\_012152). Purification method: Antigen affinity purified.

## Formulation

PBS with 0.02% sodium azide and 50% glycerol pH 7.3.

## Storage

Store at -20°C. DO NOT ALIQUOT

## Clonality

Polyclonal

## Ig Type

Rabbit IgG

## Applications

ELISA, WB, IHC, FC

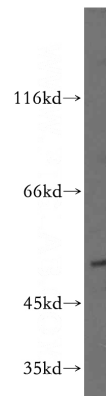
## Dilutions

Recommended Dilution:

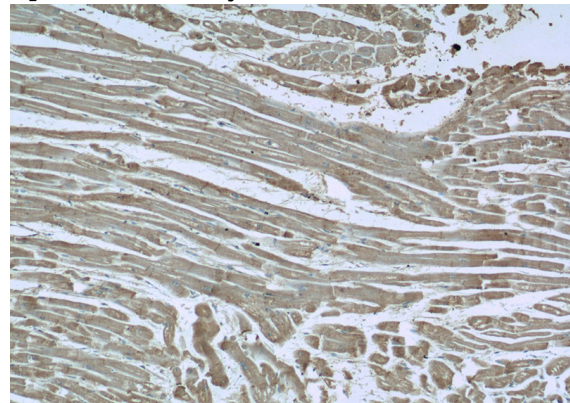
WB: 1:200-1:2000

IHC: 1:20-1:200

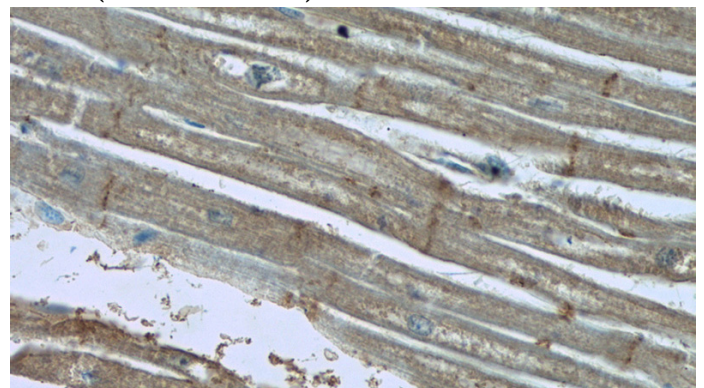
## Validations



PC-3 cells were subjected to SDS PAGE followed by western blot with Catalog No:110304(LPAR3-Specific antibody) at dilution of 1:500



Immunohistochemistry of paraffin-embedded human heart tissue slide using Catalog No:110304(LPAR3-Specific Antibody) at dilution of 1:100 (under 10x lens)



Immunohistochemistry of paraffin-embedded human heart tissue slide using Catalog No:110304(LPAR3-Specific Antibody) at dilution of 1:100 (under 10x lens)

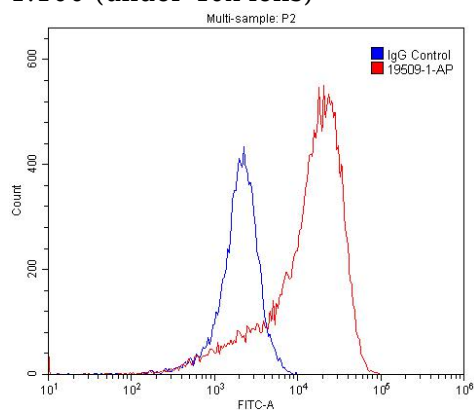
# EDG7-Specific antibody



Catalog Number: 110304

---

1:100 (under 40x lens)



1X10<sup>6</sup> PC-3 cells were stained with 0.2ug LPAR3-Specific antibody (Catalog No:110304, red) and control antibody (blue). Fixed with 4% PFA blocked with 3% BSA (30 min). Alexa Fluor 488-conjugated AffiniPure Goat Anti-Rabbit IgG(H+L) with dilution 1:1500.