

ECM2 antibody



Catalog Number: 110295

Product name

ECM2 antibody

IHC: 1:20-1:200

IF: 1:20-1:200

Specificity

Human, Mouse, Rat; other species not tested.

Antibody description

ECM2 Rabbit Polyclonal antibody. Positive IHC detected in human ovary tissue. Positive IF detected in L02 cells. Positive WB detected in L02 cells. Observed molecular weight by Western-blot: 48 kDa, 58 kDa, 80 kDa

Preparation

This antibody was obtained by immunization of ECM2 recombinant protein (Accession Number: XM_047422899). Purification method: Antigen affinity purified.

Formulation

PBS with 0.02% sodium azide and 50% glycerol pH 7.3.

Storage

Store at -20°C. DO NOT ALIQUOT

Clonality

Polyclonal

Ig Type

Rabbit IgG

Applications

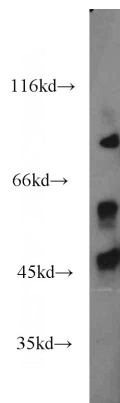
ELISA, WB, IHC, IF

Dilutions

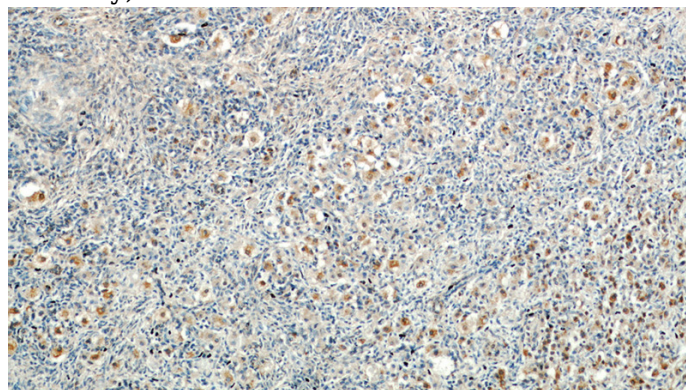
Recommended Dilution:

WB: 1:200-1:1000

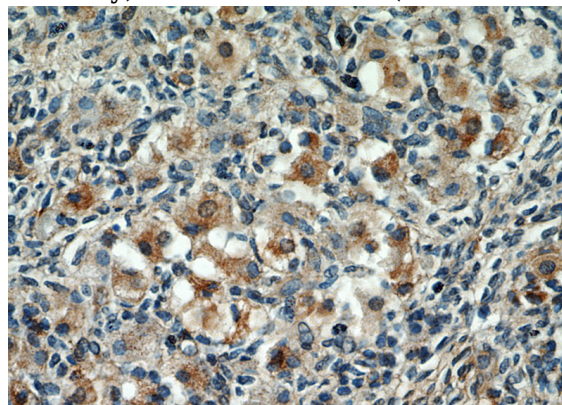
Validations



L02 cells were subjected to SDS PAGE followed by western blot with Catalog No:110295(ECM2 antibody) at dilution of 1:200



Immunohistochemical of paraffin-embedded human ovary using Catalog No:110295(ECM2 antibody) at dilution of 1:50 (under 10x lens)



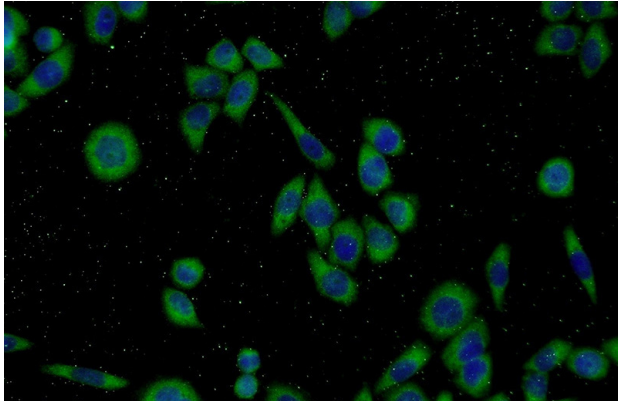
Immunohistochemical of paraffin-embedded human ovary using Catalog No:110295(ECM2

ECM2 antibody



Catalog Number: 110295

antibody) at dilution of 1:50 (under 40x lens)



Immunofluorescent analysis of L02 cells using Catalog No:110295(ECM2 Antibody) at dilution of 1:50 and Alexa Fluor 488-conjugated AffiniPure Goat Anti-Rabbit IgG(H+L)