

# ECM1 antibody

Catalog Number: 110294

## Product name

ECM1 antibody

## Immunogen

[Human ECM1 Recombinant protein \(GST tag\)](#)

## Specificity

Human, Mouse, Rat; other species not tested.

## Antibody description

ECM1 Rabbit Polyclonal antibody. Positive WB detected in A549 cells, HepG2 cells, L02 cells, MCF7 cells, mouse kidney tissue, mouse liver tissue, mouse pancreas tissue, rat pancreas tissue. Positive IHC detected in human thyroid cancer tissue, human breast cancer tissue, human lung cancer tissue, human pancreas cancer tissue. Positive IF detected in HepG2 cells. Observed molecular weight by Western-blot: 50-55 kDa

## Preparation

This antibody was obtained by immunization of ECM1 recombinant protein (Accession Number: NM\_004425). Purification method: Antigen affinity purified.

## Formulation

PBS with 0.1% sodium azide and 50% glycerol pH 7.3.

## Storage

Store at -20°C. DO NOT ALIQUOT

## Clonality

Polyclonal

## Ig Type

Rabbit IgG

## Applications

ELISA, WB, IHC, IF

## Dilutions

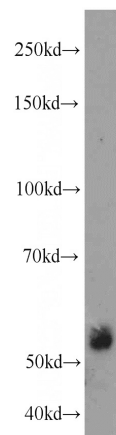
Recommended Dilution:

WB: 1:500-1:5000

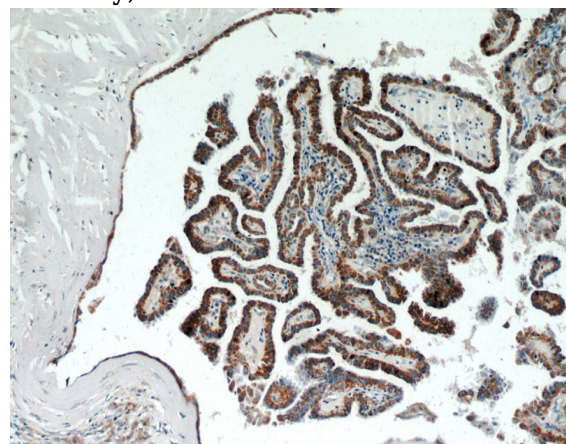
IHC: 1:20-1:200

IF: 1:50-1:500

## Validations



A549 cells were subjected to SDS PAGE followed by western blot with Catalog No:110294(ECM1 antibody) at dilution of 1:1500

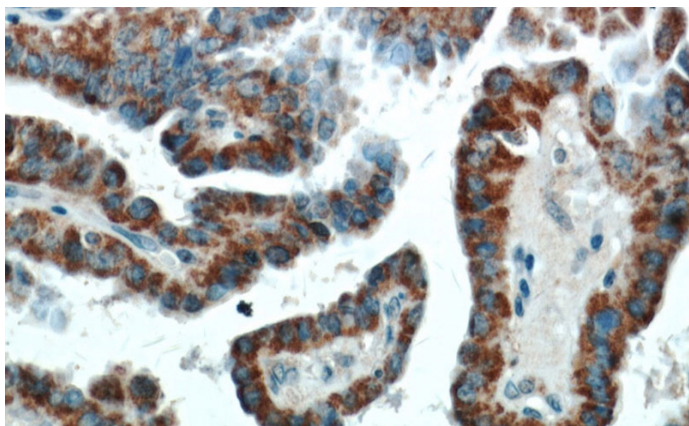


Immunohistochemical of paraffin-embedded human thyroid cancer using Catalog No:110294(ECM1 antibody) at dilution of 1:100 (under 10x lens)

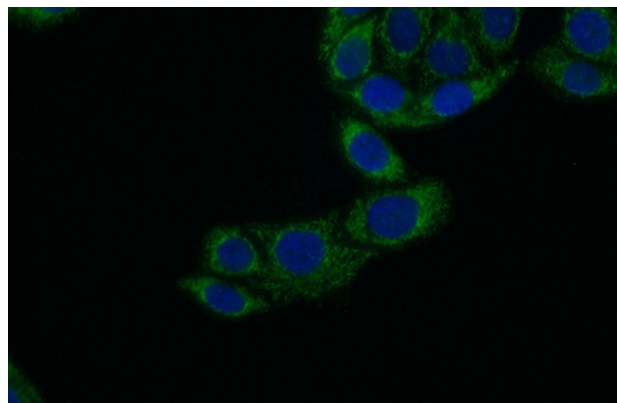
# ECM1 antibody

Catalog Number: 110294

---



Immunohistochemical of paraffin-embedded human thyroid cancer using Catalog No:110294(ECM1 antibody) at dilution of 1:100 (under 40x lens)



Immunofluorescent analysis of (10% Formaldehyde) fixed HepG2 cells using Catalog No:110294(ECM1 Antibody) at dilution of 1:50 and Alexa Fluor 488-conjugated AffiniPure Goat Anti-Rabbit IgG(H+L)