

# ECD antibody

Catalog Number: 110290

## Product name

ECD antibody

IP: 1:200-1:1000

IF: 1:10-1:100

## Specificity

Human, Mouse; other species not tested.

## Antibody description

ECD Rabbit Polyclonal antibody. Positive IF detected in HeLa cells. Positive WB detected in HeLa cells. Positive IP detected in HeLa cells. Observed molecular weight by Western-blot: 73 kDa

## Preparation

This antibody was obtained by immunization of ECD recombinant protein (Accession Number: NM\_007265). Purification method: Antigen affinity purified.

## Formulation

PBS with 0.1% sodium azide and 50% glycerol pH 7.3.

## Storage

Store at -20°C. DO NOT ALIQUOT

## Clonality

Polyclonal

## Ig Type

Rabbit IgG

## Applications

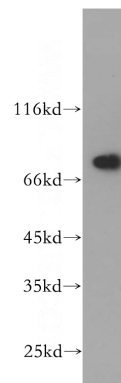
ELISA, WB, IF, IP

## Dilutions

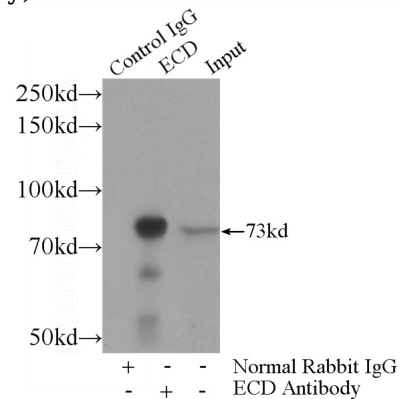
Recommended Dilution:

WB: 1:200-1:2000

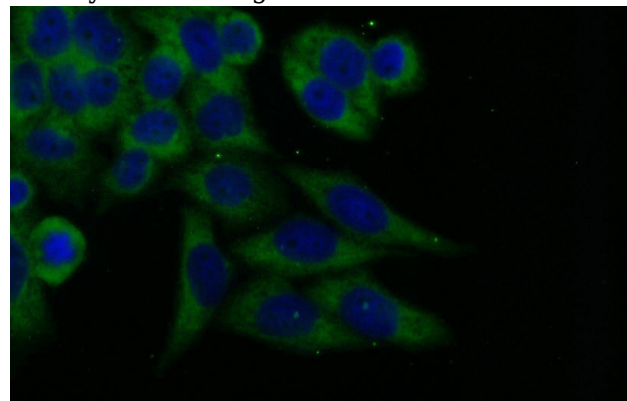
## Validations



HeLa cells were subjected to SDS PAGE followed by western blot with Catalog No:110290(ECD antibody) at dilution of 1:300



IP Result of anti-ECD (IP:Catalog No:110290, 4ug; Detection:Catalog No:110290 1:300) with HeLa cells lysate 2480ug.



Immunofluorescent analysis of HeLa cells using Catalog No:110290(ECD Antibody) at dilution of

# ECD antibody



Catalog Number: 110290

---

1:25 and Alexa Fluor 488-conjugated AffiniPure

Goat Anti-Rabbit IgG(H+L)