

# ELMOD2 antibody

Catalog Number: 110284

## Product name

ELMOD2 antibody

IP: 1:200-1:1000

IHC: 1:20-1:200

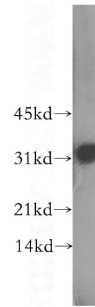
## Specificity

Human, Mouse, Rat; other species not tested.

## Antibody description

ELMOD2 Rabbit Polyclonal antibody. Positive IHC detected in human pancreas cancer tissue. Positive WB detected in A549 cells. Positive IP detected in A549 cells. Observed molecular weight by Western-blot: 32 kDa

## Validations



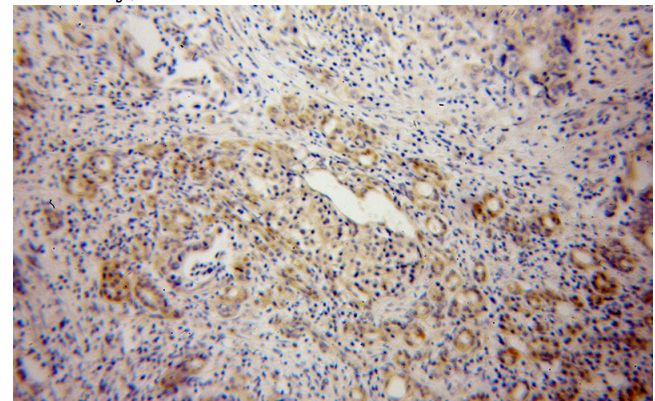
## Preparation

This antibody was obtained by immunization of ELMOD2 recombinant protein (Accession Number: XM\_011531819). Purification method: Antigen affinity purified.

A549 cells were subjected to SDS PAGE followed by western blot with Catalog No:110284(ELMOD2 antibody) at dilution of 1:400

## Formulation

PBS with 0.02% sodium azide and 50% glycerol pH 7.3.



## Storage

Store at -20°C. DO NOT ALIQUOT

## Clonality

Polyclonal

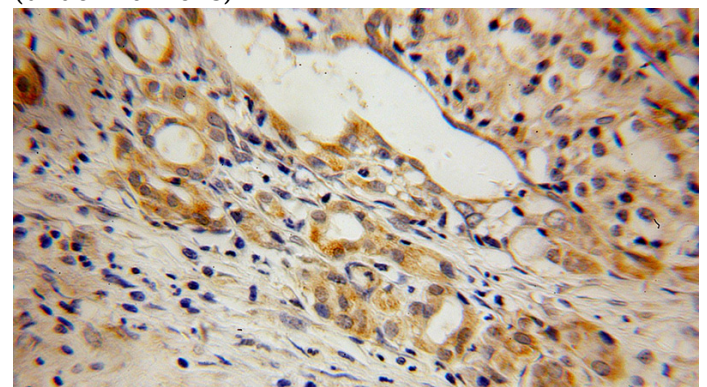
Immunohistochemical of paraffin-embedded human pancreas cancer using Catalog No:110284(ELMOD2 antibody) at dilution of 1:100 (under 10x lens)

## Ig Type

Rabbit IgG

## Applications

ELISA, WB, IHC, IP



## Dilutions

Recommended Dilution:

WB: 1:500-1:5000

Immunohistochemical of paraffin-embedded

# ELMOD2 antibody

Catalog Number: 110284

---

human pancreas cancer using Catalog No:110284(ELMOD2 antibody) at dilution of 1:100

IP Result of anti-ELMOD2 (IP:Catalog No:110284, 4ug; Detection:Catalog No:110284 1:400) with A549 cells lysate 1040ug.

